

IFS for Process Manufacturing



Whether you're in food and beverage, chemicals or life sciences, IFS has the solution.



IFS helps you challenge the status quo

The most successful enterprises know how to adapt to, and embrace, what's next in their market. IFS help make our customers' businesses so agile they can view what's next not as a threat to be managed but an opportunity to be seized.

IFS solutions:

- Are built on industry standards, so you aren't locked into a proprietary technology
- Have a modular architecture so you can quickly add, adapt, scale and integrate as you need to
- Are so user-friendly you will be using the rich functionality in no time
- Offer you greater visibility into your business to spot the challenges early
- Give you greater knowledge of how your business needs to adapt
- Provide greater flexibility to take the necessary action to make change happen

IFS ticks all the boxes and bags, batches, tins, etc

Process manufacturers face a number of crucial questions

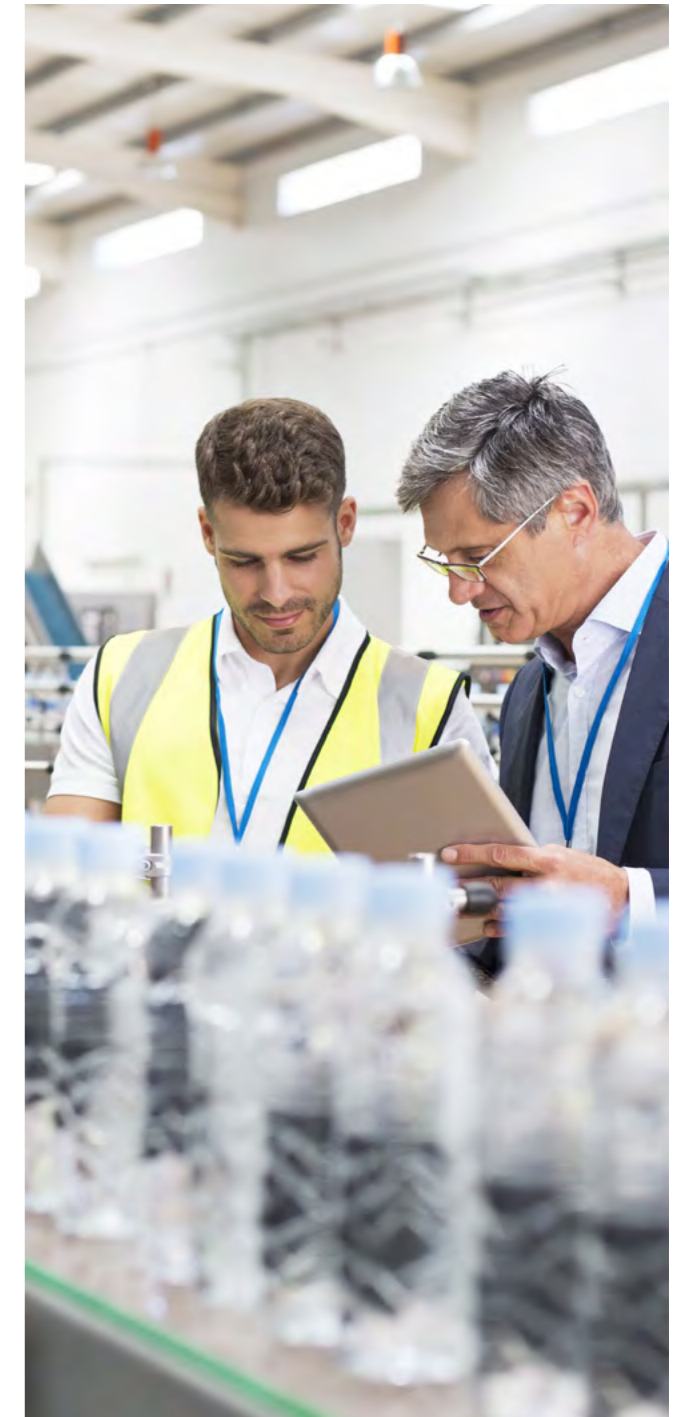
Can you deliver seamless supply chain communication with sub-sidiaries, suppliers, partners, and customers—whether they are across town or across the globe? Can you monitor processes across geographical and departmental boundaries? Or easily sense and respond to changes in demand to strike a balance between customer service and cost of supply?

Integrated business software provides answers

A single integrated system with functionality broad enough to support quality management, quality assurance, product development, document management, forecasting and CRM—with data instantly available to all who require it. Enterprise software that matches the needs of your industry, including recipe management, batch balancing, batch tracking, multiple units of measure, and shelf life and expiration date management. And that offers integrated eco-footprint management? These are key answers to the questions above.

IFS: for today's challenges—and what's next

If you're in the chemical, food & beverage, life sciences or paint & coatings industries, IFS supports your value chain, from product development, marketing and sales to demand management, manufacturing, distribution and after-sales services—all integrated with financials and human resources. IFS combines industry-specific functionality with the strength of an agile suite of enterprise software to give you the agility you require to turn challenges in process manufacturing into opportunities.



Finding the right mix

Process industries transform raw materials into intermediates and products; commodities become customized, and innovative solutions hit the shelves. But how do you maintain quality amid increasing variation in raw ingredients, recipes and packaging? How do you ensure that your supply chain is swift, while retaining complete control over every single item that goes through it? And how do you handle demand planning and material management?

Seeing is achieving

Process manufacturers today are likely to operate in a multi-site set-up with local distribution centers networked with specialized, large-scale production plants. Moreover, the raw materials and products they handle –foodstuffs, natural ingredients, chemicals, pharmaceuticals, etc. –are highly sensitive and in many cases, extremely hazardous. What they need to retain quality while remaining efficient and profitable is complete traceability in the supply chain, and a single, scalable view for inventory transparency, product coding, and re-allocation of products within the network.

Return on capital assets

While capacity utilization and high-volume production are major goals, demand for low-volume, high-margin specialty products must be met. Do you need more effective postponement strategies that allow you to mix efficient make-to-stock manufacturing with responsive make-to-order?

Return on capital is enhanced with effective preventive and corrective maintenance. Support from an enterprise applications provider with strength in asset management is important to process manufacturers. Close integration between maintenance and production capacity planning functionality confirms the value of a single integrated system.

Corporate social responsibility (CSR)

The role of CSR has increased dramatically over the last decade. One reason is the growing complexity of complying with international and national regulation of process industries. Standards such as REACH, ISO 14 000, General Food Law Regulation (EC) 178/2002, and FDA GMP, and methods such as HACCP are examples of areas where compliance monitoring is rigorous. The coming years will bring even more regulations, more data requests along the supply chain, and a greater focus on data sheet content and quality.

But CSR has another dimension—as a value creator. By innovating and promoting a sustainable business model, you can raise your image as a responsible, ethical organization. This creates a competitive advantage in the marketplace that is important for investors. Successfully implemented CSR and sustainability efforts have a positive impact on the value of your company and its earnings, and better integrate your business with the community.

Product innovation = production complexity

Market-oriented strategies lead to diversified product lines based on customer specifications and often produced in smaller quantities than is typical of commodities. To catch early, generous margins, build brand identity and create value, product innovation paired with quick time to market is important. The existing product portfolio must adapt to changing raw material specifications, while quality is maintained and unnecessary costs avoided.

Best practices require enterprise integration. True market-driven innovation follows from close collaboration among sales, product marketing, key customers and suppliers. This proves the value of broad ERP support for all core processes across the supply chain.

Made to measure

IFS gives you the agility to strike a balance between the efficiency of make-to-stock and make-to-forecast production and the responsiveness required by seasonality, campaigns and other causes of fluctuating customer demand.

IFS's global capability and native support for multi-language, multi-currency and multi-site functionality is a platform for achieving meaningful change through support extended into new geographies, markets and channels.

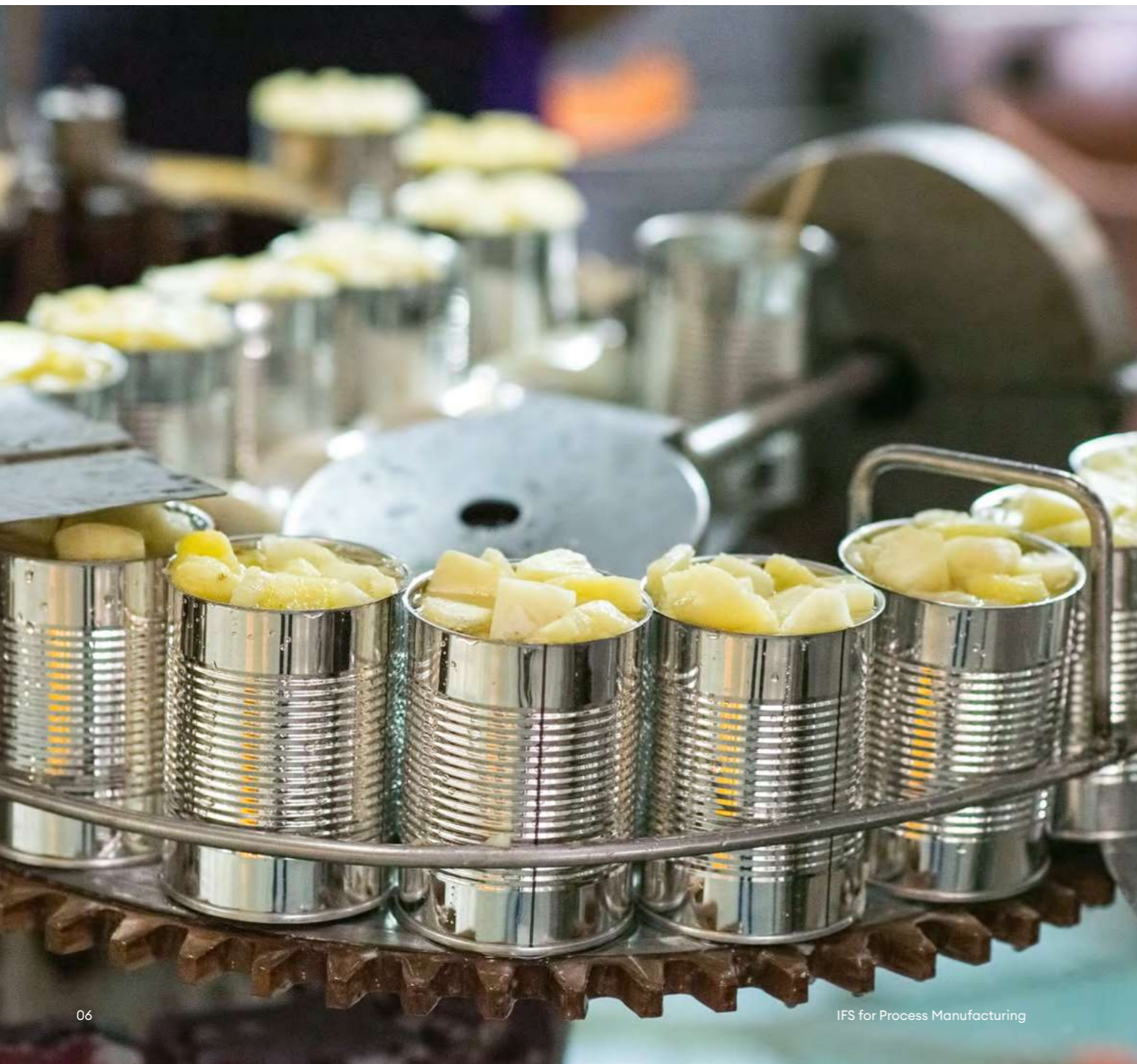
IFS includes mixed-mode production capabilities that allow you to mix responsive make-to-order and make-to-forecast with efficient make-to-stock as well as batch process manufacturing with line-based repetitive manufacturing.

Industry-specific functionality begins with formulation and recipe management, batch balancing and multiple units of measure (MUoM), all native to IFS, as are full traceability and genealogy tracking. IFS is a single integrated enterprise solution for process manufacturing—whether your concern is ingredients or parts; formulas or bills; bulk or units.



All the Ingredients you need

IFS is a flexible, integrated enterprise solution for large and midsize production plants, distribution sites and sales offices in the food & beverage, chemicals, life sciences, and paint & coatings industries. Its rich functionality supports your business processes from recipe creation through sales and marketing, production, distribution and after-sales services.



Food & beverage

IFS supports industry requirements that include production-line balancing, traceability and catch-weight, shelf-life and expiration-date management. Advanced management of prices, discounts, rebates and charges mediates complex relationships with suppliers, partners and customers. And the often complex world of commissions, campaigns, and promotions is made much easier by the fact that all the information you need—and all the exceptions—is stored in a single location. In the food & beverage industry, IFS is used mainly by large and mid-sized companies.

Chemical industries

IFS supports specific needs for product development—including simulation and history tracking of formulations and recipes—as well as advanced formula management, production sequencing, calculation-of- environmental-footprint, multi-channel sales, multiple units of measure and multiple package options. In the chemicals and paint & coatings industries, IFS is used by international, multi-country, multi-site, multi-language, large and mid-sized enterprises involved in the manufacture, sales and distribution of chemical products.

Life sciences

IFS supports Total Quality Management and traceability including audit and compliance tracking. Control over product formulations and recipes as well as advanced formula management, production sequencing, calculation of environmental footprint, multi-channel sales, multiple units of measure and multiple package options are all part of the IFS footprint. In the life sciences industries, adherence to standards are critical and IFS has the components to help you achieve validation to 21 CFR part 11, MHRA and EMA, with electronic signatures and batch records part of its core. IFS is used by international, multi-country, multi-site, multi-language, large and mid-sized enterprises involved in the manufacture, sales and distribution of pharmaceutical and nutraceutical products.

Support for global business

Our solutions support a global view of production and in-transit activities, based on multi-plant master scheduling and MRP. All data—including quality and yield information—is in one place. Integrated demand planning leads to reliable, collaboration-based forecasts, and interacting with the master schedule, ensures goods are available when required.

Corporate and operations performance is tracked through digital dashboards and web portals, accessed through laptops, tablets and smart phones. The parameters important to profitability are viewed as needed, regardless of location.

Quality assurance and material compliance

Quality management in IFS includes failure modes and effects analyses (FMEAs), control plans, statistical process control (SPC) charts, and capability indices. IFS's comprehensive product data management (PDM) application and integrated document management system support secure review and approval processes. IFS Process Models™ describe and document work done. Monitoring and prevention increase efficiency and cut costs. For chemicals industries, the recipe functionality includes material breakdown capabilities that enable substance content to be calculated. For food & beverage, IFS Quality Management™ supports HACCP.

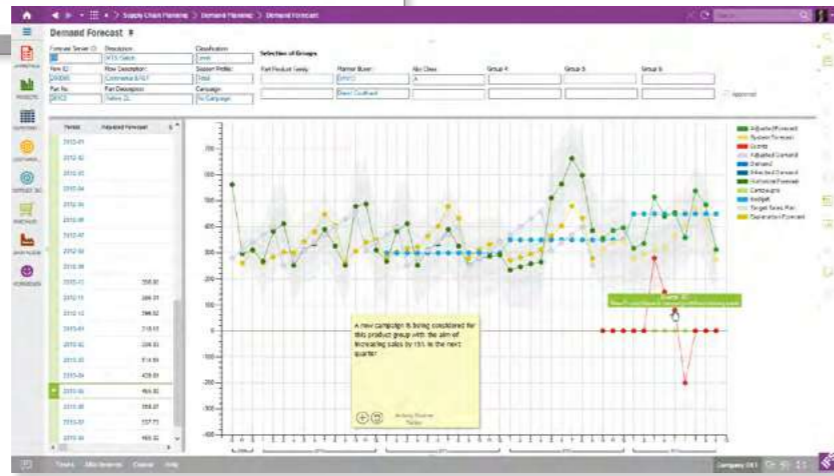
Making the most of assets

Enterprise asset management in IFS combines calendar-based maintenance with event-based, condition-based and predictive maintenance strategies. Mobility solutions capture work orders, fault reports, preventive maintenance routes and report times, spare parts and easurements on equipment—wherever you are.



IFS Lobby™ will provide you with visibility of key metrics in a single view, the right data at the right time and increased operational agility.

IFS Demand Planning™ is a statistical forecasting tool, including support for seasonality, events and promotions.



Regulatory issues

The European Food Safety Authority (EFSA) and the U.S. Food & Drug Administration (FDA) are the major influences on global legislation bearing on food safety. REACH is the European Union’s framework legislation for the management, control and use of chemicals. In the U.S., the federal Toxic Substances Control Act (TSCA) gives the EPA authority to regulate new and existing chemicals.

In most countries, product recalls of some type occur nearly every week. Quality failures, major recalls or a poor response to a needed recall can do great damage to a brand’s reputation.

IFS has the product traceability needed for a swift, cost-effective response, achieved through lot-number tracking for all inventory. Traceability starts with the batch through to finished goods and the distribution chain.

A single agile solution

IFS product development is market-driven and based on the changing needs of industrial manufacturers. IFS’ inherent agility, based on a robust technical platform, leaves its industry users ready to respond to market and technology changes that can’t as yet be fully anticipated.

A worldwide network of offices and partners ensure support is always local. Implementation, consulting and maintenance are offered via IFS offices or partners with experience within the process industries and with our solutions.

We support our users and ongoing business development through customer communities for knowledge sharing that include industry advisory councils and the openIFS forum.



What’s next?

Just over the horizon, E-labeling is set to revolutionize product information and transparency. Smart packaging as a means of minimizing waste will be on retailers’ shelves by late 2018, driving growth in intelligent links. And value chains are becoming increasingly global to retain value in the supply chain, control transport costs and secure scarce raw materials. Buzzwords like ‘coopetition’ and ‘frenemies’ are part of what’s next for process manufacturers. Are you ready?

About IFS

IFS develops and delivers enterprise software for companies around the world who manufacture and distribute goods, build and maintain assets, and manage service-focused operations. Within our single platform, our industry specific products are innately connected to a single data model and use embedded digital innovation so that our customers can be their best when it really matters to their customers—at the Moment of Service.

The industry expertise of our people and of our growing ecosystem, together with a commitment to deliver value at every single step, has made IFS a recognized leader and the most recommended supplier in our sector. Our team of 4,000 employees every day live our values of agility, trustworthiness and collaboration in how we support our 10,000+ customers. Learn more about how our enterprise software solutions can help your business today at [ifs.com](https://www.ifs.com).