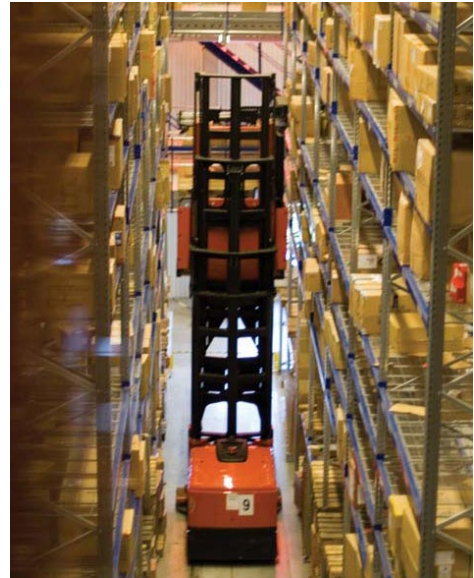


## INVENTORY PLANNING AND REPLENISHMENT

Since the industrial revolution commercial endeavor has been in a state of constant evolution. Many organizations are committed to an on going process of continual assessment with the sole objective of exploring the possibilities to find new ways to run their business operation more efficiently.

One area that has pioneered more new practices than most is inventory planning and replenishment. And the reason for this is due to the critical role it plays in terms of consuming a company's key resources: time, cash and labor. Equally important is the role it plays in providing customers' with a reliable service.

The purpose of this Executive Summary is to provide you with a brief overview on the capabilities provided by IFS' new Inventory Planning and Replenishment software. So you may envisage the abundance of new possibilities to further refine your inventory planning and replenishment set up.



### A SOLUTION FOR INVENTORY REPLENISHMENT USING REORDER LEVELS

Inventory Planning and Replenishment (IPR) is the function that supports wholesale customers as well as other customers that want to plan and replenish their inventory levels more accurately. A number of inventory control methods are added to the inventory part and incorporate Demand Planning in to the process. The functionality is based on functionality developed together with IFS customers and has already been successfully implemented by 20 customers.

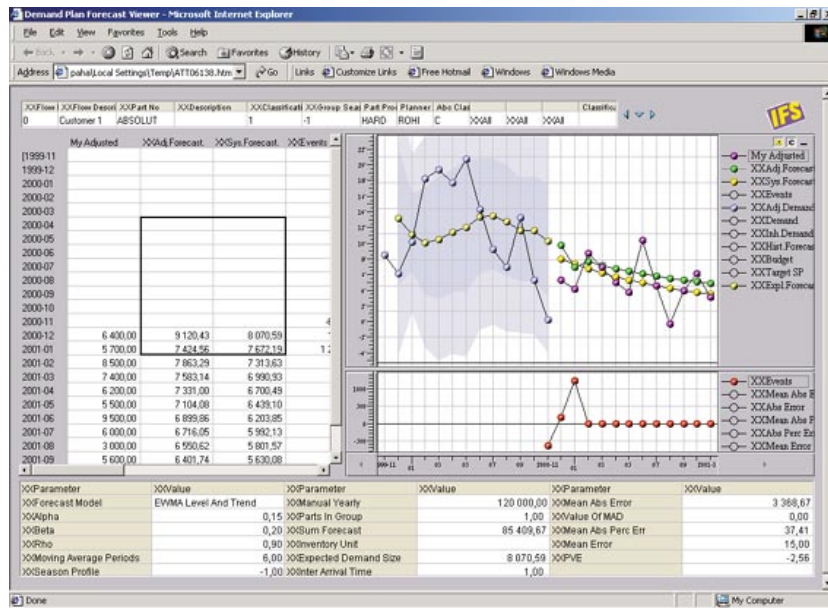
### MAIN FEATURES AT A GLANCE

Although the solution is feature rich we have listed only the prime functions that make IFS Applications new Inventory Planning and Replenishment solution such a worthwhile to addition to any business looking to increase its efficiency in this area.

- Assortment classification
- Management of planning parameters through a hierarchical model
- Considers Product Lifecycle stages
- Policy driven planning parameters
- Designed for high volumes
- Large number of parts
- Large number of transactions
- Special planning models for slow movers or turnover

### IDEAL CIRCUMSTANCES FOR DEPLOYING IPR

IPR provides companies with a powerful, efficient and the impartial management of large numbers of parts. Allowing for the classification of parts and inventory management policies defined by groups.



The following circumstances have been identified as major areas where the new IPR solution can make a big contribution.

1. When an inventory buffer is required when the market expects a lead time that is shorter than the supply lead time.
2. When demand is independent and not just a function of the demand for other parts.
3. When supply is de-coupled, for example from an external supplier or an internal inventory buffer.

**BENEFITS AND GAINS**

A quick overview of the benefits and gains associated with IFS Applications new IPR solution.

- Integration with IFS / Demand Planning means improved response to changes in demand and forecast accuracy.
- Essential support for the planner which will enable them to calculate next order date for prioritization of proposals.
- Special support for slow movers.
- Rapid ROI and substantial improvement potential. With IPR a company can keep lower inventories, reduce administration costs and improved customer service.
- A proven solution for distribution and spare parts management.
- Extremely high performance because all heavy calculations are performed in the Demand Servers

**THE NEXT STEP**

Clearly the IPR solution can take your business to a new level of operation and opens the door to greater efficiency. It is a vital tool for companies that are experiencing increasing competition and are looking for way in which they can sharpen their own competitive edge. To see how effective deploying IFS Applications IPR solution could be for your business please contact your local IFS Applications office and meet the people behind the foremost Inventory Planning and Replenishment solution.

**FOR MORE INFORMATION**

Contact the IFS office nearest you, or visit us at: [www.IFSWORLD.com](http://www.IFSWORLD.com).