



MASTER ON-DEMAND MANUFACTURING WITH IFS MAKE TO ORDER™

IFS/Make|Configure|Assemble to Order™ (IFS MTO|ATO) enables you to reduce inventories, minimize lead times, reduce waste, and lower your cost of production. You can produce exactly what your customers want, when they want it, even when your products are complicated. You can also deliver these orders quickly and on time without letting your stock inventories balloon out of control.

IFS/Make|Configure|Assemble to Order™ allows you to order the components necessary to build a final product only when a customer order for that product is received and still ship as promised. It also simplifies the process of producing finished goods from in stock assemblies and components at the time an order is received.

GAIN FULL CONTROL OF TIME, COST, AND PEGGING

IFS/Make|Configure|Assemble to Order™ uses Dynamic Order Processing (DOP), which enables you to create a multi-level structure for planning, purchasing, and manufacturing with full control of time, cost, and pegging. DOP supports pegging to any level in the structure. Below that level, MRP manages the remaining parts. The benefits are extensive: you can use actual costing, easily monitor progress at all levels of production, gain flexibility in your part management, and propagate changes in supply and demand dates or quantities upstream or downstream.

REDUCE COSTS AND IMPROVE EFFICIENCY BY CREATING DYNAMIC ORDERS AUTOMATICALLY

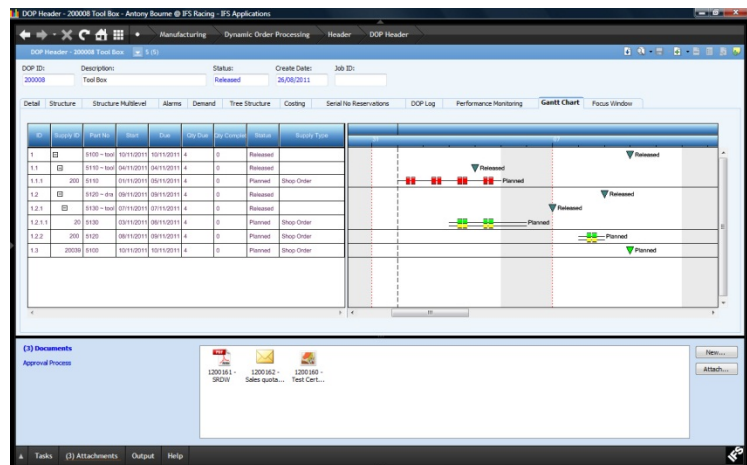
IFS/Make|Configure|Assemble to Order™ is integrated with many other components within IFS Applications™, such as IFS/Customer Orders™, which creates dynamic orders automatically from customer order lines. From there, other integrated components then allow you to easily process these orders. When combined with IFS/Constraint-Based Scheduling™, the component also supports advanced planning and scheduling to deal with both material and capacity constraints.

STREAMLINE YOUR ORDER FULFILLMENT PROCESS

IFS/Make|Configure|Assemble to Order™ lends itself to a manufacturing environment that deals with a number of standard product structures that are built up from common, in-stock components. Since different finished products may be in demand at different times, you want to produce them only when a customer order is received for them. Through IFS/Customer Orders™ and IFS/Shop Order™, you can easily streamline the order fulfillment process. This is because shop orders are automatically created from customer order lines, and products are automatically issued back to the customer order upon completion.

SUPPORT CONFIGURED PRODUCTS

IFS MTO|ATO utilizes a specialized technique to support configure-to-order functionality. By using the concept of a configurable part, the integrated IFS/Configure to Order™ component reduces the number of parts, product structures, and routings that are necessary to build parts that are members of configuration families.



Gantt chart with order structure



Order Entry

- Releasing a customer order line for a product automatically triggers the DOP process.
- Releasing a customer order line automatically generates a shop order for the product.

Order Structure

- In DOP, order-unique structures can be created by using a standard product structure, by copying or modifying an existing DOP structure, or by entering a new structure.
- Each DOP structure can be viewed in a time-phased Gantt chart and can be compared to other structures.

Supply Orders

- Pegged supply orders have flexible release features—from a single purchase order release to a multilevel all-at-once release.
- The requirements of individual orders in a DOP structure are used in netting (i.e. locating unpegged inventory). Netting can be done automatically or manually from order excess or inventory, enabling control at the detail level.
- You can re-net or re-create pegged orders if the quantity and/or structure are changed.
- For IFS/MTO | ATO, the shop order functions as a supply order, providing the finished product to the customer order.

Alarm

- The progress of each DOP order is monitored.
- An alert is displayed whenever an order cannot be delivered in time or in the required quantity.

Cost Analysis

- Several costing techniques are available: standard, order-unique, and actual.
- Performance monitoring lets you analyze the cost progress for any given order in a DOP structure.

LEARN MORE

To find out more about how IFS and IFS Applications™ can help your organization maintain its competitive edge, visit www.IFSWORLD.com.