

WHITE PAPER



**DESIGNED FOR
QUALITY ASSURANCE**



CONTENT

EXECUTIVE SUMMARY	1
WHAT IS ISO/TS16949?	2
ISO/TS 16949 AND THE PROCESS APPROACH	3
HOW IFS APPLICATIONS SUPPORTS ISO/TS 16949	4
IFS Business Modeler	4
IFS Document Management	5
IFS Business Performance	5
IFS Human Resources	5
IFS PDM Configuration	6
IFS Engineering Change Management	6
IFS Quality Management	6
IFS Preventive Maintenance	7
IFS Work Order	7
IFS Event Management	8
QUALITY INTEGRATED THROUGHOUT THE ENTIRE ORGANIZATION MAXIMIZES BENEFITS	8
ABOUT IFS	9



DESIGNED FOR QUALITY ASSURANCE

EXECUTIVE SUMMARY

Quality can be defined as “fitness for use as defined by the customer”. A quality product or service contributes to customer satisfaction; poor quality means dissatisfied customers.

In today’s competitive marketplace, the process of controlling internal and external quality processes has become increasingly important and more complex for all companies. From a company’s operational point of view, a high level of internal and supplier quality is of the utmost importance. Quality management is needed for continuous improvements, defect prevention, reduction of variations, and reduction of waste. Compliance with ISO/TS 16949 is a requirement for most Automotive suppliers. Moreover, most companies are required to adopt the “Six Sigma” approach to proactive quality management.

In IFS Applications, we have integrated tools that make it easier and less costly to achieve and maintain TS compliance. You can value stream mapping with IFS Business Modeler, control all types of documents in IFS Document Management, and manage your processes in IFS Business Performance. And IFS Human Resources helps you with successful strategic human resource planning. IFS’ components for engineering minimize the work of specifying and configuring design elements and products. Quality is ensured by streamlining the administration of all related documentation, including revisions.

IFS Quality Management provides the ability to define control plans, test and inspection instructions and standards for parts, suppliers, and manufacturing processes. The most common SPC charts for variables and attributes are supported, and capability indices can be calculated for any process. IFS’ maintenance components make up a complete maintenance system that provides the proactivity, openness and agility to develop and adapt to keep pace with the rapidly changing demands of the world around you.

With IFS Event Management, you can let the application become an active part of the business processes by immediately notifying employees, customers, and suppliers as events occur. This paper illustrates how IFS Applications supports ISO/TS16949.

WHAT IS ISO/TS16949?

Quality systems have been an important aspect of the automotive industry for many years. Early, when suppliers implemented quality management systems, vehicle manufacturers realized that the ISO9000 series was not sufficient to meet their specific automotive needs.

In the U.S., Ford, General Motors and Chrysler developed QS-9000, which described their quality system requirements for their suppliers. QS-9000 is supported by a series of support manuals that focus on key automotive tools: Measurement System Analysis (MSA), Failure Mode and Effects Analysis (FMEA), Advanced Product Quality Planning (APQP), and Statistical Process Control (SPC). In France, Germany and Italy similar quality system requirement documents were developed (EAQF, VDA6.1, AVSQ). As the goal for all vehicle manufacturers was the same, it was decided to develop a common, global standard—ISO/TS 16949—to support the quality requirements for the automotive industry.

ISO/TS 16949:2002 was released in March 2002. It is an automotive quality management technical specification that was jointly developed by the IATF members based on ISO 9001:2000, AVSQ, EAQF, QS-9000 and VDA6.1.

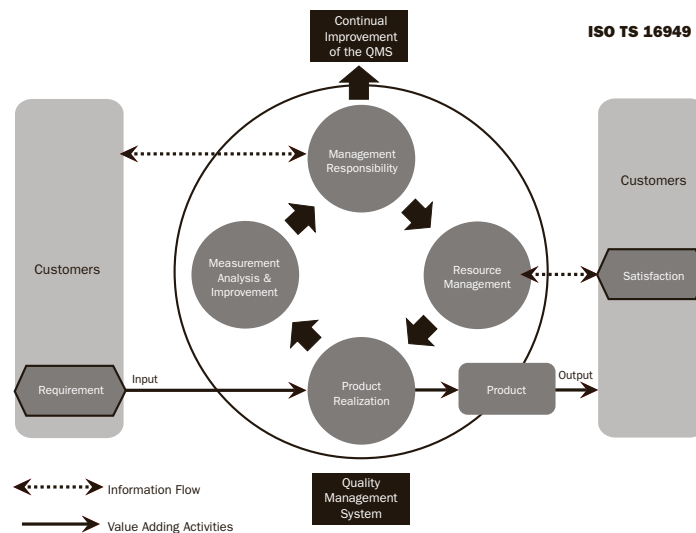


Figure 1: Model of a process-based quality management system

ISO/TS 16949 AND THE PROCESS APPROACH

Customer satisfaction and customer requirements are central goals of the ISO/TS 16949 standard. It promotes the process approach when developing, implementing and improving the effectiveness of a quality system to achieve these goals.

Practitioners have to identify a large number of linked activities in order to enable the transformation of inputs and outputs that will be defined as a process.

Figure 2: below describes a process-based quality management system. Customers play a significant role in defining requirements as inputs. Monitoring of customer satisfaction is also important.

The “Plan-Do-Check-Act” (PDCA) methodology can be applied to all the processes.

Plan: establish the objectives and processes necessary to deliver results in accordance with customer requirements and the organization’s policies.

Do: implement the process

Check: monitor and measure processes and product against policies, objectives and requirements for the product, and report the results.

Act: take actions to continually improve process performance.

(Technical specification ISO/TS 16949, Second Edition 2002)

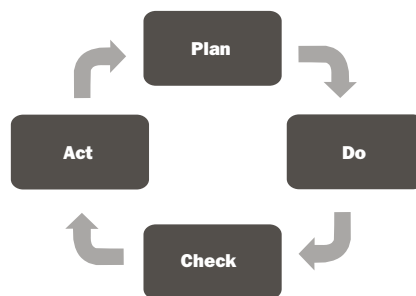


Figure 2: Plan-Do-Check-Act

(Adapted from Technical specification ISO/TS 16949, Second Edition 2002)

HOW IFS APPLICATIONS SUPPORTS ISO/TS 16949

Quality functionality is integrated throughout IFS Applications. This part describes some of the components that support you in your ISO/TS 16949 work.

IFS Business Modeler

IFS Business Modeler is an integrated package of PC-based tools, methods, and graphical models that makes it easier to match your company's existing processes with best-practice processes. In doing so, you can easily pinpoint areas for improvement and design new, more efficient processes. It gives you the insights you need to operate more efficiently and profitably, with an increased focus on customer satisfaction. Then you can keep using IFS Business Modeler to continuously refine and communicate your company's processes. You can use IFS Business Modeler to attach documents from IFS Document Management to activities, which gives you a great opportunity to create a quality management and auditing system.

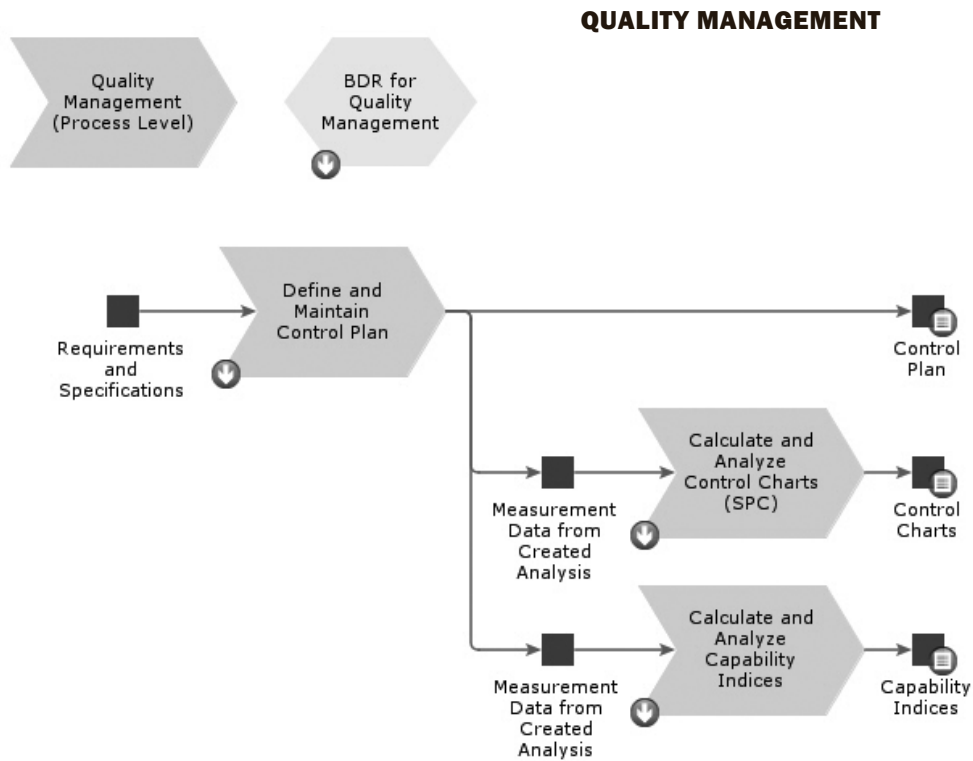


Figure 3: IFS Business Modeler

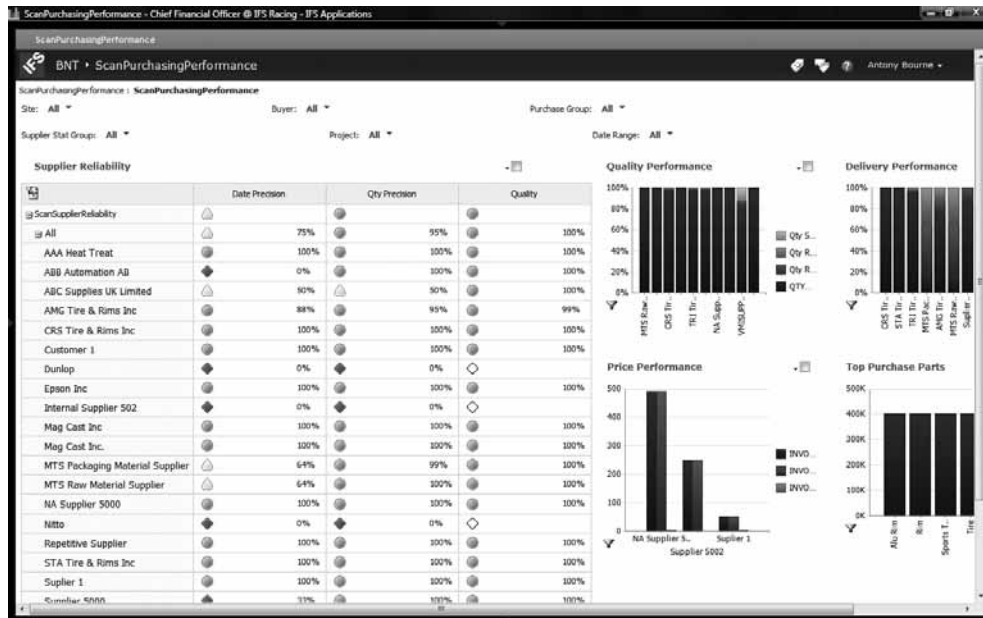


Figure 4: IFS Business Performance

IFS Document Management

Managing documents is not an end in itself. It is an essential part of day-to-day operations, ensuring that the right information is available to the right people at the right time. IFS Document Management, our simple yet powerful approach to document management, gives you full control over your company's documentation. You can attach documents to any object within the application. For example you can attach drawings to your Control Plan. When you want to enter test results, the document reference (the drawing) is inherited to the entering of test results window. IFS Document Management ensures people have access to the information they need and, through document revision, check that it is the correct information.

IFS Business Performance

IFS Business Performance supports the management control process, including business planning, business follow-up, and analysis of business critical information, by providing an integrated strategic performance management and control system.

IFS Human Resources

IFS' human resources components save time and money through rational and cost-effective human resource administration. The components provide fast and accurate analysis, securing the competence and development needs of a company and its employees. The human resources components are essential for successful strategic human resource planning.



IFS PDM Configuration

IFS PDM Configuration is a comprehensive product data management system that puts a host of product-related data at your fingertips. Whether used in conjunction with the development of a new product or modification of an existing design, IFS PDM Configuration enables you to specify and configure parts, products, and facilities—plus create all associated documentation. In the process, you can manage costs with access to cost summaries or part registers to help you make informed decisions. IFS PDM Configuration is the complete tool to follow a product or part through its entire lifecycle.

IFS Engineering Change Management

IFS Engineering Change Management makes engineering change processes easier. The component lets you receive, check, and approve change requests before converting them into change orders. You can also analyze change impact, which minimizes the risk of making unnecessary or incorrect changes, and can access a complete revision history. Single-entry of data and seamless integration with other components in IFS Applications, such as IFS PDM Configuration and IFS Document Management, make this a powerful tool for product design.

IFS Quality Management

IFS Quality Management enables you to organize and analyze your data systematically and comprehensively to meet ever-increasing quality demands. Total quality management (TQM) has become the rule. Proactive decision-making and failure prevention are the keys to effectively managing quality. IFS Quality Management includes failure modes and effects analyses, control plans, SPC charts, and capability studies. As the component is fully integrated with IFS Applications, it supports the entire production process, enabling you to control parts in manufacturing, distribution, and inventory locations.

You can set up an FMEA to identify potential failures and causes, and create a control plan to specify how to check each item and how often. When you have created a control plan, IFS Quality Management makes it easy to set up a test procedure and record test or inspection results. All entered results have total traceability because they are time-stamped. You can use IFS Quality Management not only for in-process control but also for historical tracking and various evaluative follow-up methods.

With IFS Quality Management, you can create, view, and analyze X bar and R, X-bar and S, X and MR, np, p, c, and u control charts. You can also do capability indices calculations. IFS Applications also includes material review board (MRB) functionality for handling the disposition of defective material.

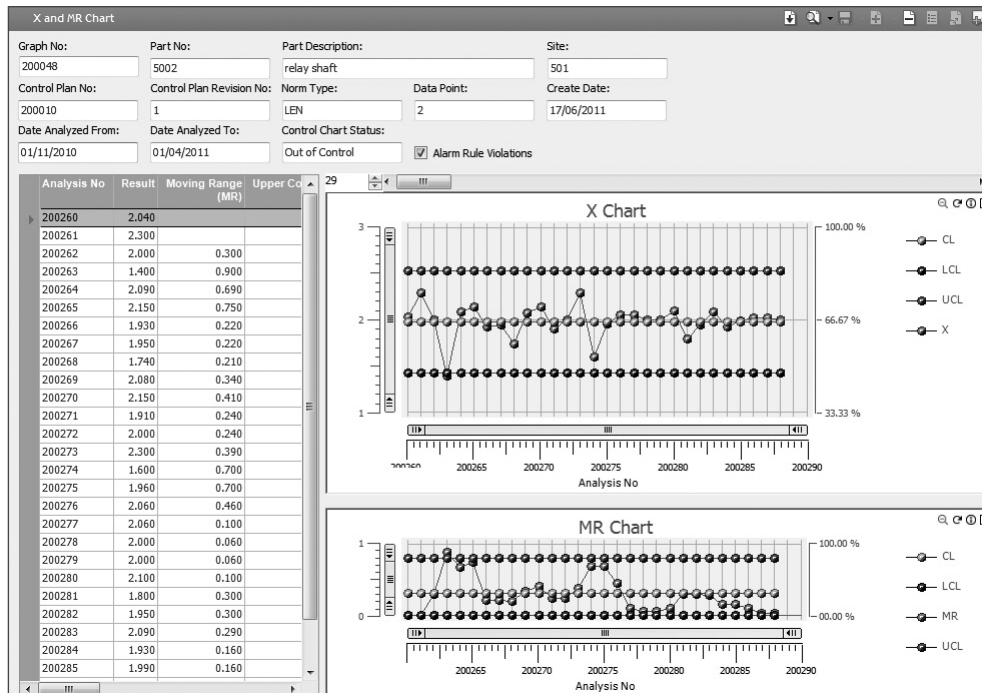


Figure 5: IFS Quality Management, SPC Chart

IFS Preventive Maintenance

IFS Preventive Maintenance is used to set up schedules for regular preventive maintenance. The module organizes and prepares all types of tasks in the facility, regardless of whether they are controlled by the condition of the machine, events or a calendar schedule, or whether staff or contractors perform them. IFS Preventive Maintenance also manages tests required by various authorities as well as general, recurring tasks.

IFS Work Order

IFS Work Order manages all tasks affecting the maintenance organization: fault reports, preparation, planning and final reporting. The graphical work order scheduling enables you to handle resources, skills and operations by using drag-and-drop functions. Traceability via information access layers provides complete follow-up and analysis management. The result is more efficient maintenance work, reducing both direct and indirect maintenance costs as well as loss of revenue caused by standstills. The work order information can be handled in different kinds of clients, such as PDAs, and Web portlets.



IFS Event Management

With IFS Event Management, the application becomes an active part of the business processes by immediately notifying employees, customers, and suppliers as things happen. You can use events both to inform and to prompt action. For example, customers can receive notification if their order is delayed for any reason, and managers can be prompted when there are new supplier invoices to approve.

You can also use the event server within the SPC support together with alarm rules. The system notifies you if, for example, you have an SPC chart that is out of control.

QUALITY INTEGRATED THROUGHOUT THE ENTIRE ORGANIZATION MAXIMIZES BENEFITS

Quality is so much more than product quality. It includes management, processes, and employee training. It also covers communication throughout the company, ensuring that users have data and information readily available, and reducing the cost of administering a quality system. IFS Applications offers you integrated components that simplify your quality work and help guarantee quality throughout all aspects of your operations. It facilitates problem solving by using historical data/results and tracks progress via Business Performance Scorecards and Portals. With quality management tools such as Control Plans, FMEA, SPC, Business Modeler and document management fully integrated with your manufacturing, purchasing and inventory software, there is no need to register data twice. It is all in one system.

ABOUT IFS

IFS is a public company (OMX STO: IFS) founded in 1983 that develops, supplies, and implements IFS Applications™, a component-based extended ERP suite built on SOA technology. IFS focuses on agile businesses where any of four core processes are strategic: service & asset management, manufacturing, supply chain and projects. The company has more than 2,000 customers and is present in 50+ countries with 2,700 employees in total.

More details can be found at www.IFSWORLD.com.
For further information, e-mail to Info@ifsworld.com

AMERICAS	+1 888 437 4968
ARGENTINA, BRAZIL, CANADA, MEXICO, UNITED STATES	
ASIA PACIFIC	+65 63 33 33 00
AUSTRALIA, INDONESIA, JAPAN, MALAYSIA, NEW ZEALAND, PHILIPPINES, PR CHINA, SINGAPORE, THAILAND	
EUROPE EAST AND CENTRAL ASIA	+48 22 577 45 00
BALKANS, CZECH REPUBLIC, GEORGIA, HUNGARY, ISRAEL, KAZAKHSTAN, POLAND, RUSSIA AND CIS, SLOVAKIA, TURKEY, UKRAINE	
EUROPE CENTRAL	+49 9131 77 340
AUSTRIA, BELGIUM, GERMANY, ITALY, NETHERLANDS, SWITZERLAND	
EUROPE WEST	+44 1494 428 900
FRANCE, IRELAND, PORTUGAL, SPAIN, UNITED KINGDOM	
MIDDLE EAST AND AFRICA	+971 4390 0888
INDIA, SOUTH AFRICA, SRI LANKA, UNITED ARAB EMIRATES	
NORDIC	+46 13 460 4000
DENMARK, NORWAY, SWEDEN	
FINLAND AND THE BALTIC AREA	+358 102 17 9300
ESTONIA, FINLAND, LATVIA, LITHUANIA	

www.IFSWORLD.com

THIS DOCUMENT MAY CONTAIN STATEMENTS OF POSSIBLE FUTURE FUNCTIONALITY FOR IFS' SOFTWARE PRODUCTS AND TECHNOLOGY. SUCH STATEMENTS OF FUTURE FUNCTIONALITY ARE FOR INFORMATION PURPOSES ONLY AND SHOULD NOT BE INTERPRETED AS ANY COMMITMENT OR REPRESENTATION. IFS AND ALL IFS PRODUCT NAMES ARE TRADEMARKS OF IFS. THE NAMES OF ACTUAL COMPANIES AND PRODUCTS MENTIONED HEREIN MAY BE THE TRADEMARKS OF THEIR RESPECTIVE OWNERS.

IFS AB ©2011