

TAKE CONTROL OF ALL OF YOUR ASSET DATA WITH IFS ASSET DATA MANAGEMENT

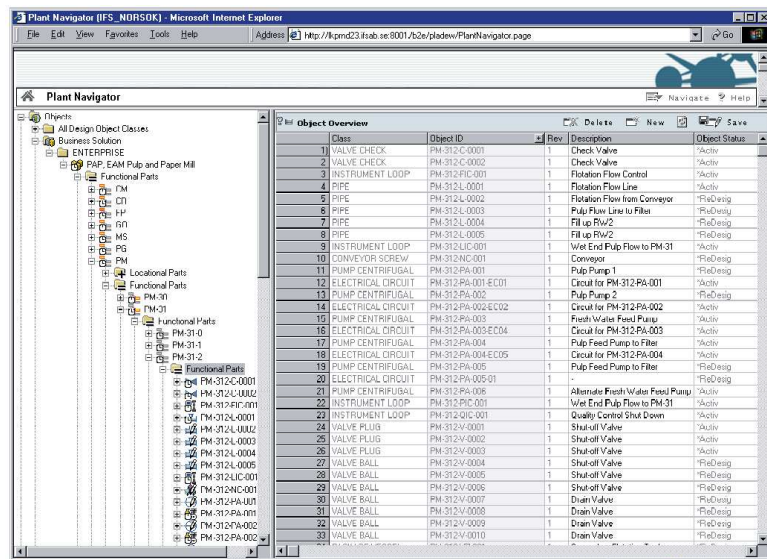
IFS/Asset Data Management™ provides a powerful set of integrated tools for managing plant assets. The tool facilitates easy navigation through plant structures, for example functional or location breakdowns of plants and efficient functionality for creating and maintaining plant asset information.

The module supports documentation and engineering of facilities in process industries, power plants, power grids, telecommunications, etc. It is aimed at engineering contractors, consultants and plant owners. IFS/Asset Data Management™ also supports process, electrical, instrumentation and AEC Plant and Piping Engineering for the full life cycle of a plant, from pilot study through basic design, basic and detailed engineering and commissioning to operation and maintenance. The tool supports the design of new plants as well as the revamp of plants currently in operation.

BENEFITS

IFS/Asset Data Management™ provides powerful and efficient tools for:

- Navigating through all plant structures and design part structures for quick and easy retrieval of asset data.
- Extremely efficient bulk editing tools for creation and editing of large amounts of data in one transaction.
- Fully integrated document management. Documents connected to objects or design parts are navigable in the asset trees.
- Dynamic user interface displaying information in an intelligent way. Cables are shown in the cable overview page, switchgears in the switchgear assignment page, etc.
- Simplified data entry via the capability to define class-based rules. This approach trims lists of values, defines technical characteristics and controls the appearance of the user interface to aid the user.
- Support for drag & drop, simplifying the creation of relations and allowing the user to make shortcuts to objects and/or design parts on the desktop or send them to other project participants through email.
- Easy access to frequently used objects and structures from a separate personal favorites tree.
- Improved data quality due to single-point data entry and easy access to accurate information for all project members.



Plant navigator and an object-oriented view for efficient editing of asset data



IFS/ASSET DATA MANAGER—FUNCTIONAL OVERVIEW

IFS/Asset Data Management™ also has close connections to IFS/Document Management™, IFS/Purchasing™ and IFS/Equipment™.

PLANT NAVIGATION AND DATA MANAGEMENT

- Powerful tools for creating and maintaining objects, object structures, design parts, part structures and spare parts lists.
- Support for part properties such as cable parts, mechanical nozzles, electrical terminals and channels.
- Windows® Explorer-like navigational functionality, in addition to data and document display capabilities, in the Plant Navigator, a tool that graphically represents your equipment structures.
- Support for internet-based project collaboration.
- Support for large revamp projects in facilities without disrupting the maintenance processes.
- Support for efficient work with powerful tools such as copy/paste, fill down/fill series, and Search/replace.
- Support for selection of design part based on object demands through the “best fit search” wizard and/or by using design part codes.
- Support in the engineering database for the majority of equipment data and identification standards.
- Support for revision notes for objects and history logging for objects and design parts.
- Support for version and status management on design parts.

IMPORT/EXPORT OF TECHNICAL DATA

- IFS/Component Specification™ is a powerful Microsoft Excel® add-in tool used for generating equipment specification sheets, sent back and forth between the project design group, suppliers, and manufacturers.

DOCUMENT MANAGEMENT

- IFS/Document Management™ is a complete document registration and management tool fully integrated with IFS/Asset Data Management™.
- Create new or connect existing documents directly from the Plant Navigator and access them with View and Edit commands.

PURCHASING

- Access purchasing processes directly from Plant Navigator, such as the creation of requests for quotations and purchase requisitions.

EQUIPMENT AND MAINTENANCE

- Data created in the IFS/Asset Data Management™ can easily be transferred to IFS/Equipment™ by changing the status of objects or entire functional or location structures.
- Objects, object structures, technical data, spare parts lists and document connections are automatically copied to equipment when objects are planned for operation and/or put into operation.
- Equipment object data are automatically transferred back to design when objects are taken out for Redesign.

LEARN MORE

To find out more about how IFS' EAM solutions can help your organization maintain its competitive edge, see the IFS Enterprise Asset Management brochure. For general information about IFS Applications™, call (888) 437-4968, or visit www.ifsworld.com.