



IFS APPLICATIONS™ FOR

OIL & GAS

PROJECT-DRIVEN INDUSTRY SOLUTIONS



OUR SOLUTION'S DNA

When we first set out to create IFS Applications over 25 years ago, our goal was to make the most usable business software on the market. And to help us achieve that ambition, we put simplicity at the forefront of everything we did.

We still do.

We decided that we would make only one product, which can be easily configured to match the specific requirements of a broad range of industries.

We still do.

We decided that we would build IFS Applications on standards so our customers would not be locked into any particular technology.

We still do.

We decided to design IFS Applications as a component-based structure so it can be easily extended and updated.

We still do.

We decided that each software component must be totally compatible with every other, yet capable of running independently.

We still do.

We decided to build a product that could handle change and long-term evolution.

We still do.

And, that we would make the most user-friendly business software on the market.

We still do that, too.

IFS HAS A STRATEGIC FOCUS ON THE OIL & GAS INDUSTRY

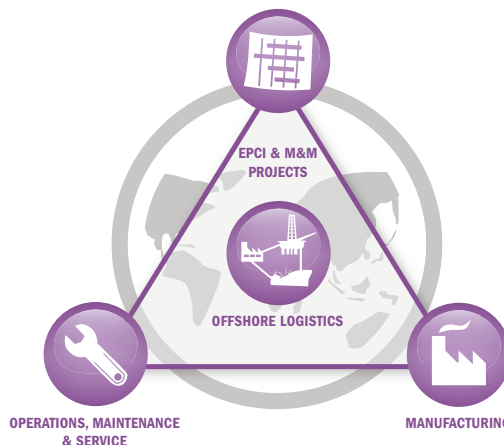
For more than 20 years, IFS has worked closely with leading contractors, suppliers and service companies to ensure our solutions meet the oil & gas industry's stringent requirements. With over 400 project-oriented companies using IFS' solutions today, our strategic focus on the oil & gas industry is evidenced in deep industry expertise, broad functional coverage and a solid track record.

IFS offers flexible, component-based project-driven business solutions that manage the entire lifecycle of contracts, projects, assets and services. IFS Applications includes functionality for contract and project management, risk management, budgeting and forecasting, engineering, material management, sub-contracting, document management, fabrication, service and maintenance management, as well as financials and human resources.

Because our solution is component-based, i.e., built on a service-oriented architecture, it's not just easier to implement—it also delivers a lower total cost of ownership.

If you think this all sounds too good to be true, then be prepared—it gets even better.

WELCOME TO IFS.



In the Oil and Gas industry IFS focus on EPCI Contractors, Equipment Suppliers and Operations, Maintenance & Service companies.

WHAT'S HAPPENING OUT THERE?

Things are changing rapidly in the oil & gas industry. A fluctuating oil price, new discoveries and new demands from operators are just some of the drivers in the industry. Suppliers are experiencing increased demand for resources, shorter delivery times, increased use of sub-contractors and pressure for standardization. The ability to handle change, demands for traceability and support for the entire project lifecycle are key requirements of a supplier today. Operators are increasingly taking note of their suppliers' information technology infrastructure because of the difference it can make when it comes to standardized processes, documentation delivery and project accountability.

Information technology certainly has a role to play in meeting these challenges. Particularly since many companies serving the industry are still running their businesses on older enterprise applications not really suited for the information-intensive nature of the industry. Project-driven business applications designed to meet these needs are relatively new to the market, and ought to be considered carefully by industry executives charged with succeeding in the market today.

Many oil & gas companies today still struggle with fragmented business solutions with a number of different IT systems that lack integration—making the projects even more difficult to manage and follow up.

IFS Applications is the answer to most, if not all, of these challenges. So let's have a look at some of the most important trends and challenges in your sector—to give you just a hint of how IFS Applications will enable you to deal with them more efficiently.

PROJECTS DRIVE EVERYTHING

For most oil & gas companies, projects are the cornerstone of their business. Managing projects of various sizes and complexity is often the key to success. IFS Applications is a real project-driven solution, where the project itself is the engine, ensuring high-level visibility and transparency throughout your enterprise. Project-based parameters control and determine schedules for engineering, procurement, document delivery, jobsetting and fabrication. An efficient flow of information among the different disciplines is ensured.

MANAGE ENGINEERING AND PROCUREMENT CHANGE

Integration of engineering, purchasing and fabrication with other disciplines is always beneficial, but absolutely essential for oil & gas industry contractors. IFS Applications includes a central repository, or register, for multi-discipline engineering data, shared throughout the enterprise, ensuring efficient and error-free data handovers from engineering to purchasing, fabrication to installation and—in the event of last-minute design changes—from engineering to installation.

ASSET MANAGEMENT AND MOBILITY

As the asset system of record, IFS Applications eases the transition to operations, with asset design and equipment data available from the start. The maintenance function manages design changes throughout the asset's productive life.

Our solution combines calendar-based maintenance with event-based, condition-based and predictive maintenance strategies. Integration with global positioning (GPS) mobility solutions—including IFS Touch Apps—keeps all parties in synch, based on IFS' leading mobile workforce scheduling and optimization solution.



COMPLETE MATERIAL TRACEABILITY

IFS Applications supports full traceability of material transactions and complete equipment documentation —from “as-designed” to “as-installed.” For in-stock materials, the system supports both lot/batch and serial-number-based handling, either separately or in combination. Lot/batch tracking, in turn, supports charge-number tracking. Supporting documents specify “as-built”, but also “where-used.”

Traceability rules are set by part number and can’t be overruled during subsequent material handling. Thus, regardless of where a piece of equipment, system or component is used, it can always be traced back to the relevant requisition, purchase or shop order; project, supplier or stock number; and receipt or certificate. Prescribed material deviations, where they exist, do not impede materials tracking in any way. The result is extreme convenience in searching for relevant documents and a high level of confidence that information is secure and accurate.

INTEGRATED DOCUMENT MANAGEMENT

Key project documents, either electronic or paper, remain central to getting things done. Considerable

engineering effort is expended generating documents and project-progress reports. IFS Applications includes a mature and advanced document management system, with support for revisions, approvals, distribution and transmittals, as well as SRDL/SDML documentation packages. Contractors, suppliers and service companies know they have efficient document flows, a crucial element for improved productivity.

COORDINATION, COLLABORATION & SUB-CONTRACTING

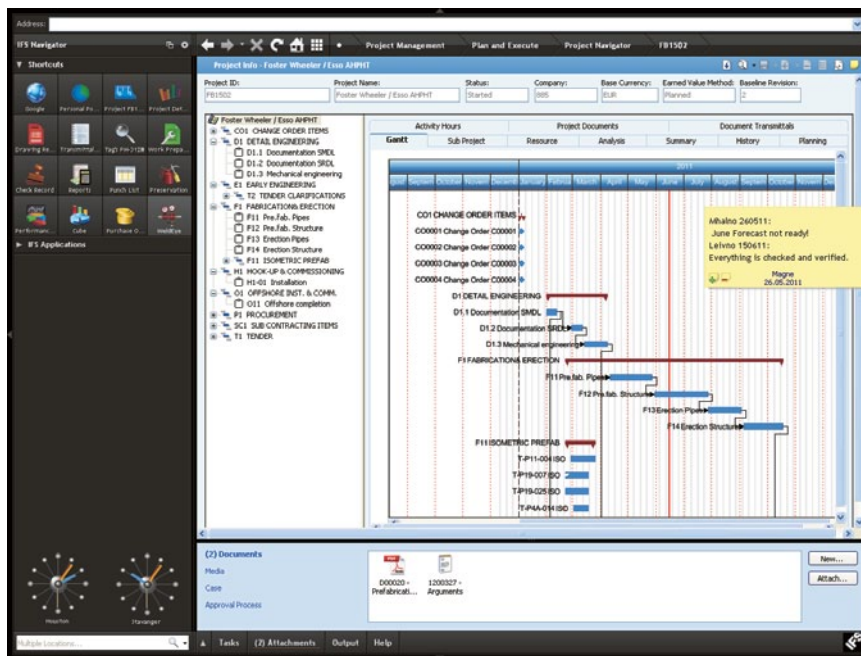
With multiple contractors and service vendors working together on major projects, complex coordination is required in today’s oil and gas fields. Joint ventures, outsourcing and sub-contracts all strain managers’ ability to stay on top of projects. IFS Applications helps overcome these challenges with solutions that include sub-contract management and web-based collaboration portals. Sub-contractor agreements, for example, can define service scope and subsequent performance-monitoring steps for complex installations, culminating in the application for payment.

PROJECTS DRIVE EVERYTHING

For most suppliers to the oil & gas industry, projects are the cornerstone of their business, and being able to manage projects of various sizes and complexity is often key to success. Given their impact across the value chain, project-based parameters should control and determine schedules for engineering, procurement, document delivery, jobsetting and fabrication.

An efficient flow of information among the different disciplines must be ensured. IFS Applications is a real project-driven solution, where the project itself is the engine, ensuring high-level visibility and

transparency throughout your enterprise. IFS Applications provides full flexibility for projects of all sizes and degrees of complexity, and templates can be made for all different types of projects. The work breakdown structure (WBS) includes all activities that will be conducted across disciplines, with documentation, purchasing and fabrication in one common structure. You can easily see the correlation between when documentation must be completed and when purchasing and fabrication can begin. Project managers can easily track progress, costs and revenue related to the different activities.



The project itself is the engine in IFS Applications and drives the deliverables (document packages, purchase orders, jobs etc).

MANAGE ENGINEERING & PROCUREMENT CHANGES

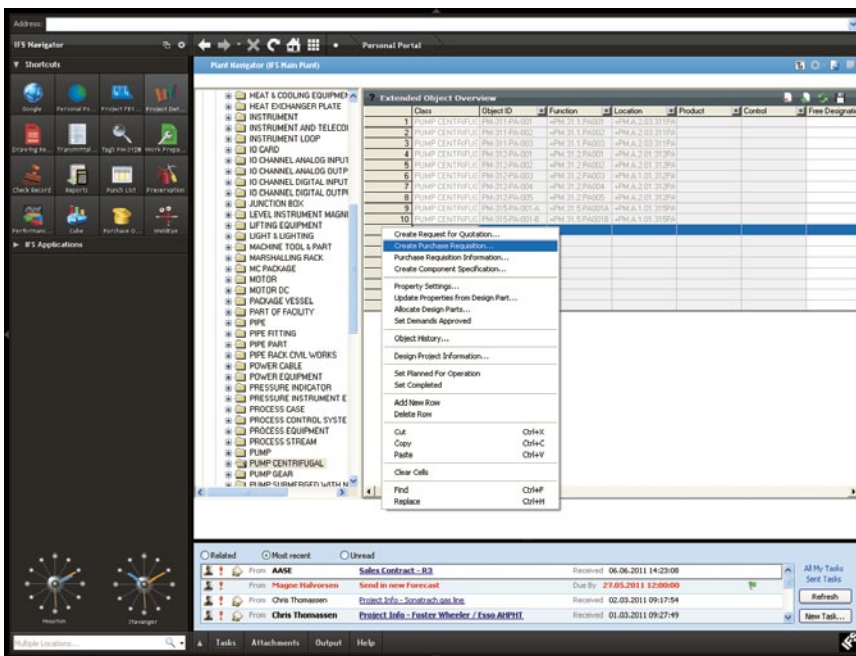
Integration of engineering and purchasing/fabrication with other disciplines is always beneficial, but absolutely essential for oil & gas industry contractors.

IFS Applications includes a central repository for multi-discipline engineering data, shared throughout the enterprise, ensuring efficient and error-free data handovers from engineering to purchasing, fabrication to installation and—in the event of last-minute design changes—from engineering to installation.

It facilitates handover from engineering to purchasing, between fabrication and installation and maybe even, in the case of last-minute changes to the design, between engineering and installation. This level of integration delivers detailed tracking

of those difficult and unexpected project changes. These changes are often difficult to manage because when there are design changes, it is not the part numbers that change, but rather the attributes of those part numbers, the documents attached to the part numbers and the tagged information.

With comprehensive product data management, real two-way CAD integrations and integrated document management, IFS Applications efficiently supports your engineering and design processes. Working in a single system, electrical, mechanical and structural engineers share information, no matter what design tools are used. This encourages collaboration, removes approval-cycle bottlenecks by putting all relevant information at managers' fingertips, and streamlines document review.



The IFS-unique multidiscipline Engineering Register functionality in combination with the integrated procurement and fabrication functionality results in more efficient processes, enhanced traceability and reduced material and change cost.

INCREASE SERVICE REVENUE AND REDUCE DOWNTIME

IFS offers owner-operators and service contractors an integrated industry solution for sound management of operations, maintenance and service requirements for both offshore and onshore environments.

In the oil & gas industry, where any downtime directly impacts the bottom line, long-term management and maintenance of assets is critical. Any contractor that performs service, upgrades or lifecycle extension on assets on an oil rig is met with strict quality requirements and demands.

Any downtime directly impacts the bottom line and must be avoided as much as possible.

IFS offers asset owners and service contractors alike an industry solution for more effective processes, increased service revenues and—ultimately—reduced downtime. Integrating project management, material management/logistics, maintenance planning, work/service order management, resource allocation, document management, financial and performance measurement, as well as human resource management, IFS Applications is all you ever need to effectively manage your service and operations.

The screenshot displays the IFS Navigator interface. On the left, the 'IFS Applications' tree is expanded to show a detailed hierarchy of equipment, including various thrusters and diesel engines. On the right, the 'Work Order for Object - 651-A-100A DIESEL ENGIN...' window is open, showing a table of work orders for the selected object.

WO No	Directive	Status	Planned Start	Planned Completion
200562	Engine overheating	FaultReport		
200573	Upgrade Centrifugal Filter	Released		
600130	Periodic service	WorkDone	28.03.2011 10:24:03	04.04.2011 10:24:03
600136	Periodic service	Released	01.04.2011 08:00:00	08.04.2011 08:00:00
600142	Periodic service	WorkDone	01.07.2011 08:00:00	08.07.2011 08:00:00
600143	Periodic service	WorkDone	03.10.2011 08:00:00	10.10.2011 08:00:00
200565	Change oil	Released		
200567	Oil leakage	FaultReport		
200616	Vibration measurement	Started	05.10.2011 15:00:00	06.10.2011 12:00:00

Asset Data Management—provides complete control of all your equipment including maintenance history as well as planned maintenance.

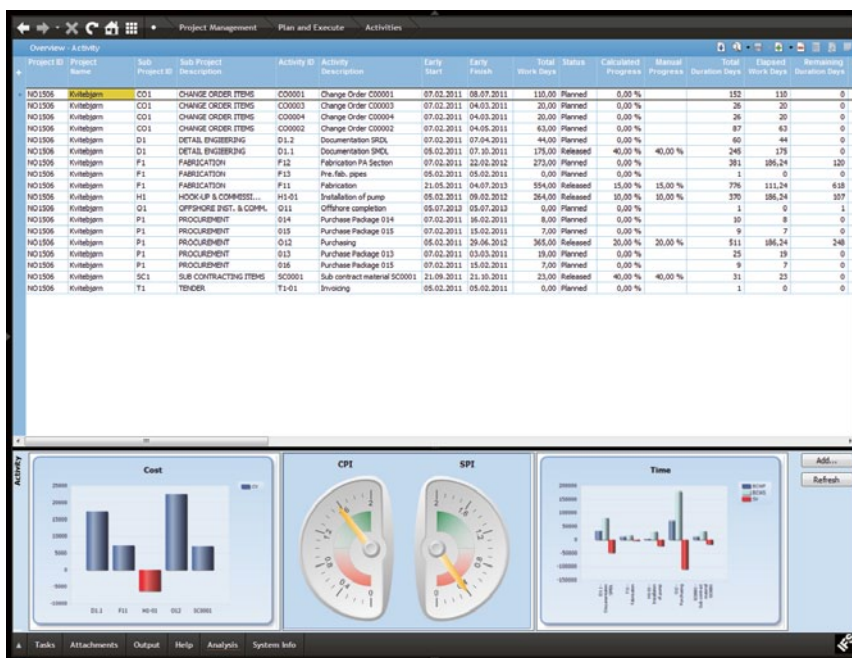
REAL-TIME PROJECT FOLLOW-UP

In IFS Applications, costs and revenue are budgeted, tracked and compared—not only in the general ledger but project-by-project. This ensures real-time follow-up and tracking of incurred and actual costs, with reliable forecasting, both detailed and overall, based on EV principles, including ETC, EAC and S-curve.

Project-cost control features support the periodic review process, comparing the latest project forecast with budget and previous forecast. These features can be brought to bear at any level of the work or cost breakdown structure. In addition, earned-value management is supported, with comprehensive project-accounting and revenue recognition features available.

Managers look at near real-time project data and future performance projections, rather than just being presented with budget, schedule and specifications results. IFS Applications helps you manage the future, not just the past.

Real-time visibility allows tracking of project milestones and identification of consequences going forward, while enabling cut-offs, reporting and forecasting—independent of traditional transaction periods. Corporate Performance Management tools like the end user tool IFS Business Analytics and IFS Business Intelligence ensure operational and strategic follow-up.



Corporate Performance Management tools like IFS Business Intelligence ensure operational and strategic follow-up.

COMPLETE LIFECYCLE SUPPORT OF PROJECTS AND ASSETS

IFS Applications is a total solution integrating all features you'll ever need to work more efficiently—whether you're in engineering, contracting, procurement, installation or any other field related to oil & gas. IFS Applications provides complete lifecycle support of contracts, projects, assets and services. Thanks to its inherent integration, IFS Applications accommodates any additional support you might require, and can be precisely configured to match the demands of your projects—today and in the future.

CONSTANT STRIVING TO REDUCE DOWNTIME

Long-term asset management and maintenance is critical for oil & gas companies, including complex offshore installations. An owner-operator or contractor doing asset upgrades or lifecycle extensions on drilling rigs or production platforms is met with strict quality requirements. Unwarranted downtime directly impacts the bottom line and must be avoided. With IFS Applications, asset owners and service contractors have an industry-based solution for more effective processes and increased service revenues.

FABRICATION—FLEXIBLE JOBSETTING DRIVEN BY THE PROJECT

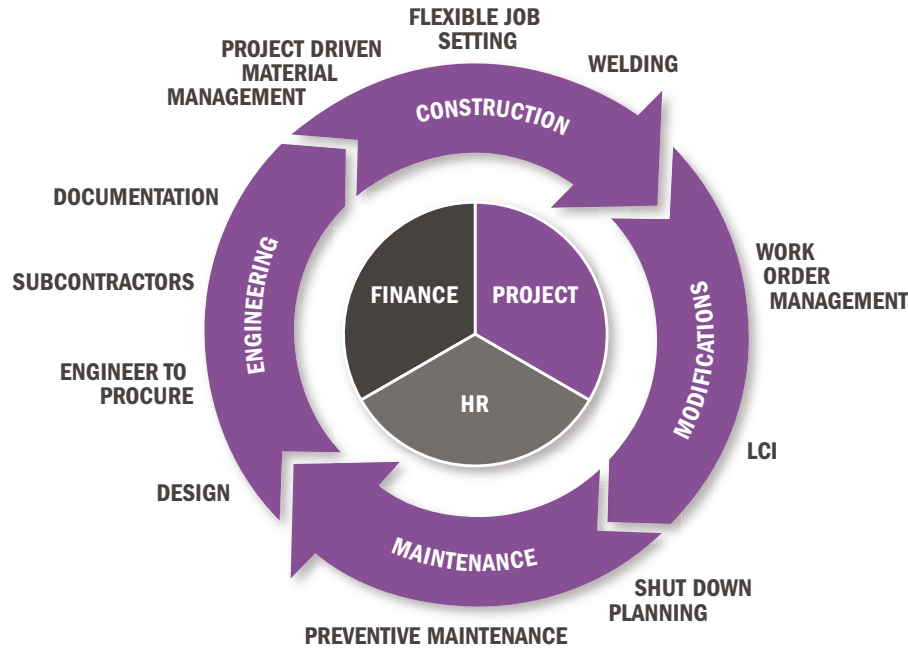
Because jobsetting requirements vary greatly, IFS Applications' functionality covers the widest range of options from plant site fabrication to offshore installation. Moreover, different disciplines face varying requirements. The information needed to install an electrical system is vastly different than what's required to transport steel. In meeting jobsetting requirements, IFS covers the fullest range of possible requirements.

FROM CONTRACTOR TO OPERATOR, AND BACK AGAIN

Operators want a more unified approach to asset management. IFS is a long-time supporter of NORSOK and the emerging ISO 15926 standard. Combined with standard integration tools, IFS can deliver lifecycle information (LCI) adapters based on XML, and ease LCI transfer to the operations environment. Unique to IFS is the ability to track a tag, asset or part from engineering to decommissioning, including links to related documentation, all in a single system.



Staying successful in the **OIL & GAS MARKETPLACE** comes down to having functional design strength in many areas. In particular, a strong project-based solution is essential to manage project cost control, planning and progress tracking, risk management and project accounting. With IFS Applications you'll be able to draw on the power of a comprehensive set of integrated components that cover the complete contract lifecycle.



IFS Applications provides complete lifecycle support of contracts, projects, assets and services.

INTEGRATION WITH PROCESS AUTOMATION SYSTEMS

Maintenance and operations collaborative efforts also gain through process-automation integration, including distributed control (DCS), supervisory control (SCADA) and geographic information systems (GIS). The need to constantly enter and leave different applications is eliminated. IFS was the first enterprise vendor to integrate with process automation systems using OPC as a standard platform. Today, OPC is the dominant means for these types of integrations.

TRACKING FINANCIAL PARAMETERS

IFS offers an integrated and powerful finance system for secure traceability and control throughout the oil & gas industry value chain. Cost and revenue are posted to the WBS and general ledger. Project accounting automatically records all financial trans-

actions based on project reporting and follow-up, regardless of year-end. Project capitalizations and revenue-recognition calculations are based on IFRS and US GAAP guidelines. Our financial solution includes accounts payable—with automated supplier invoice workflow from procurement to payment—general ledger, budget management, accounts receivable, fixed assets, cash flow, and consolidated accounts.

HUMAN RESOURCES IN THE OPERATIONS EQUATION

Management of ongoing operations involves tracking employee time and expenses—including travel, vacations and sick leave—for anything from a single job to an entire project. Support for delegated responsibilities and authorization control functions is included, as well as for recruitment, employee development & certifications and training management.

ABOUT IFS AND IFS APPLICATIONS

IFS is a public company (OMX STO: IFS) founded in 1983 that develops, supplies, and implements IFS Applications™, a component-based extended ERP suite built on SOA technology. IFS focuses on agile businesses where any of four core processes are strategic: service & asset management, manufacturing, supply chain and projects. The company has more than 2,000 customers and is present in 50+ countries with 2,700 employees in total.

If you are interested in further information, e-mail info@ifsworld.com or contact one of our regional offices or visit our web site: www.IFSWORLD.com

AMERICAS	+1 888 437 4968
ARGENTINA, BRAZIL, CANADA, MEXICO, UNITED STATES	
ASIA PACIFIC	+65 63 33 33 00
AUSTRALIA, INDONESIA, JAPAN, MALAYSIA, NEW ZEALAND, PHILIPPINES, PR CHINA, SINGAPORE, THAILAND	
EUROPE EAST AND CENTRAL ASIA	+48 22 577 45 00
BALKANS, CZECH REPUBLIC, GEORGIA, HUNGARY, ISRAEL, KAZAKHSTAN, POLAND, RUSSIA AND CIS, SLOVAKIA, TURKEY, UKRAINE	
EUROPE CENTRAL	+49 9131 77 340
AUSTRIA, BELGIUM, GERMANY, ITALY, NETHERLANDS, SWITZERLAND	
EUROPE WEST	+44 1494 428 900
FRANCE, IRELAND, PORTUGAL, SPAIN, UNITED KINGDOM	
MIDDLE EAST AND AFRICA	+971 4390 0888
INDIA, SOUTH AFRICA, SRI LANKA, UNITED ARAB EMIRATES	
NORDIC	+46 13 460 4000
DENMARK, NORWAY, SWEDEN	
FINLAND AND THE BALTIC AREA	+358 102 17 9300
ESTONIA, FINLAND, LATVIA, LITHUANIA	

www.IFSWORLD.com

THIS DOCUMENT MAY CONTAIN STATEMENTS OF POSSIBLE FUTURE FUNCTIONALITY FOR IFS' SOFTWARE PRODUCTS AND TECHNOLOGY. SUCH STATEMENTS OF FUTURE FUNCTIONALITY ARE FOR INFORMATION PURPOSES ONLY AND SHOULD NOT BE INTERPRETED AS ANY COMMITMENT OR REPRESENTATION. IFS AND ALL IFS PRODUCT NAMES ARE TRADEMARKS OF IFS. THE NAMES OF ACTUAL COMPANIES AND PRODUCTS MENTIONED HEREIN MAY BE THE TRADEMARKS OF THEIR RESPECTIVE OWNERS.

IFS AB ©2011