



IFS BATCH MANUFACTURING STREAMLINES ENVIRONMENTAL AND MIXED MODE REQUIREMENTS

IFS Batch Manufacturing™ gives you a strong competitive advantage through more efficient production planning, on-time deliveries, and higher product quality. Seamless integration with IFS Quality Management™ and other IFS Applications™ components provides easy-to-use tools that enable you to improve quality and reduce costs. IFS Batch Manufacturing™ provides powerful production solutions for handling recipes, sequencing, batch balancing, and environmental information.

OPTIMIZE YOUR PRODUCTION

If your order structure calls for the production of different-sized batches that vary with fluctuating demand, you need a powerful production-planning tool to optimize your manufacturing. Based on your current order situation and availability of raw materials, IFS Batch Manufacturing™ provides interactive support for quantity-based balancing. IFS Batch Manufacturing™ also handles sequencing. For example, in paint production, different colors can be manufactured in a predetermined order. From the critical resource, you can balance both upward and downward in the order structure, receiving continuous feedback until the order is balanced. Once you have approved the balancing, IFS Batch Manufacturing™ creates a production order for the entire order structure.

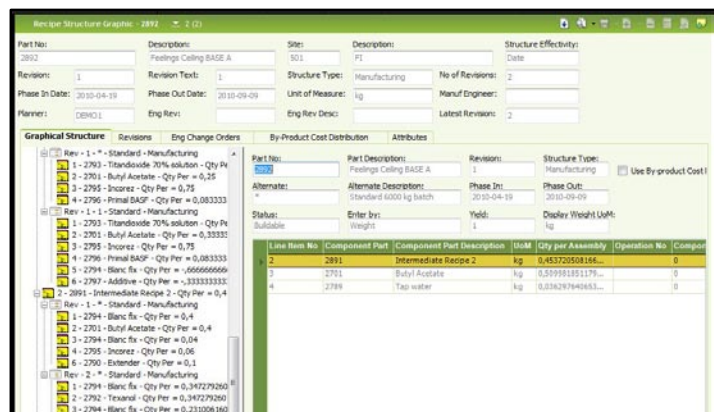
SIMPLIFY YOUR COMPANY'S ENVIRONMENTAL WORK

Environmental concerns play an important role in all process industries, no matter where you are. Every country has its own regulations for the production and management of finished products, materials, and potentially hazardous by-products. Environmental concerns are increasingly becoming a key factor in a company's competitiveness and even survival.

Concretely, this affects your daily operations. Product labels, transport documents, or export documents must be created simultaneously with production. IFS Batch Manufacturing™ makes the required product information easily accessible and supports connections to various third-party systems. For example, to get a recipe breakdown at the substance level, you can generate product information sheets and compile environmental reports in accordance with government standards and regulations.

IFS Batch Manufacturing™ in combination with other IFS Applications™ components provides you with:

- Higher delivery assurance
- Fewer out-of-stock situations
- More effective production
- Improved inventory turnover
- Quality assurance and follow-up
- Adherence to environmental regulations



Adjustable and scalable recipe optimized for production results



BATCH MANAGEMENT

- Balances production from the top down or bottom up
- Enables lot batch tracking
- Lets you plan for the production of restricted batches
- Allows you to create and handle multilevel product structures
- Offers a complete solution for mixed-mode production
- Deals with the effects of divergent bills of materials (BOMs)

RECIPE MANAGEMENT

- Flexible lot sizing that optimizes capacity utilization, minimizes waste, and reduces production costs.
- Advanced functions for scaling recipes and adjusting yields for more accurate production results.
- Mix of volume and weight—ingredients can be handled in either discrete weight density and/or volume or weight percentage.

QUALITY MANAGEMENT

- Failure modes and effects analysis (FMEA) for delineating control parameters.
- Seamless control plan definition using established control parameters.
- Easy collection of test and inspection data during production and purchasing reporting processes.
- Statistical process control (SPC) and capability indices (ppm, 6 sigma, Cp, Cpk) functionality.
- Historical database for follow-up quality analysis.

PLANNING TOOLS

- **Master Scheduling**—A single, multilevel master scheduling system that connects forecasts with production and customer orders.
- **Rough Cut Capacity Planning**—A tool that locates and identifies capacity issues based on one or many different sets of master scheduling data. Helps you define and manage resource constraints, especially from a long-term perspective.
- **Material Requirement Planning (MRP)**—A traditional MRP tool with multi-level query and simulation capabilities.
- **Capacity Requirement Planning (CRP)**—A tool that helps locate and identify capacity issues from a midterm perspective.
- **Constraint-Based Scheduling (CBS)**—A tool that schedules production activity based on predefined resource constraints. Includes sequencing capability, integrated machine, labor and tool planning, as well as pre-emptive maintenance scheduling in the short-term perspective.
- **Advanced Planning Board**—A tool that offers an unprecedented degree of visibility and control over resource allocation by enabling planners to accurately simulate what-if scenarios.
- **Demand Planning**—A totally integrated forecasting tool with functionality for evaluation and collaboration.

MIXED MANUFACTURING CAPABILITY

- Supports a mixed-mode production environment
- Can employ traditional BOMs as well as recipes with effective control of revisions and alternates

LEARN MORE

To find out more about how IFS and IFS Applications™ can help your organization maintain its competitive edge, visit www.IFSWORLD.com.