



IFS APPLICATIONS™

IFS ECO-FOOTPRINT MANAGEMENT

DO GOOD WHILE YOUR
BUSINESS DOES WELL



CALCULATE and **ANALYZE** the environmental impact
of your entire supply chain

ANALYZE the complete product lifecycle

INCREASE transparency

COMPLY WITH—and even **ANTICIPATE**—eco-legislation
requirements

ENHANCE your brand

MITIGATE risk

IMPROVE your bottom line

DO ALL THIS AND MORE

with data that is already available in your enterprise applications



In our case it's a question of increasing our credibility as we can clearly demonstrate how we are working to reduce our impact on the environment and increase the energy efficiency of our products. It's a clear competitive advantage.

**ALF SJÖBERG, CEO
IV PRODUKT, SWEDEN**



SUSTAINABILITY MAKES SENSE

Running an environmentally responsible business operation, 'going green', or whatever the latest buzzword might be, is no longer an option for organizations. At least not if they want to survive and stay one step ahead of the competition. Current and pending international legislation, increased consumer and investor awareness, and sound business sense make environmental accounting a business imperative. Because operating in an eco-friendly manner is not just good for the environment—it can also improve your bottom line.

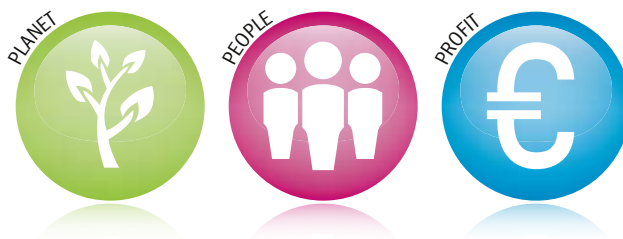
The Stockholm Conference of 1972, organized under the auspices of the United Nations, placed environmental issues firmly in the international spotlight and marked a turning point in the development of international environmental politics. Subsequent reports and summits, such as the Brundtland Report from 1987 and the Earth Summit with its Agenda 21, have served to establish and consolidate environmental concerns as issues that have to be addressed at every level of society. And all of us in the world of business have become familiar with the growing lists of requirements such as WEEE, REACH, RoHS, GRI, ISO 14001, eco-design directive and a host of other regulations designed to ensure greater sustainability.

CONSUMERS WANT PROOF...

In tandem with these developments, consumer awareness has grown. More and more end users are increasingly willing to pay a premium for the goods they purchase if they are satisfied that they are sourced, produced, transported and delivered according to ecologically sound practices. The presence of a so-called 'eco-label' on a product certifies that its provenance, use and final destination have been planned with the environment in mind. Der Grüne Punkt, the EU 'Flower', and the Nordic 'Swan' are examples of eco-labels that are helping consumers choose 'green' alternatives and thereby exert an influence on supply and demand. Similarly, the Environmental Product Declaration (EPD) and ISO 14001 certification are examples of standards that are impacting the business-to-business market.

...AS DO INVESTORS

Investor awareness is growing, too. As environmental awareness increases, the value of a company is measured in part by its ability and willingness to conduct its business in a sustainable manner. In fact sustainability reports are becoming as natural a part of an annual report as the balance sheet and income statement. And the triple bottom line of 'Planet.People.Profit' is among the new ways of determining an organization's value as defined by the Global Reporting Initiative.



FUNCTIONALITY OVERVIEW

CALCULATE A "STANDARD FOOTPRINT" BY PART

- Similar approach to standard costing
- User-definable substances
- Lifecycle Assessment—cradle-to-gate or cradle-to-grave
- Environmental Product Declaration (EPD)

ROLL-UP TO END PRODUCTS

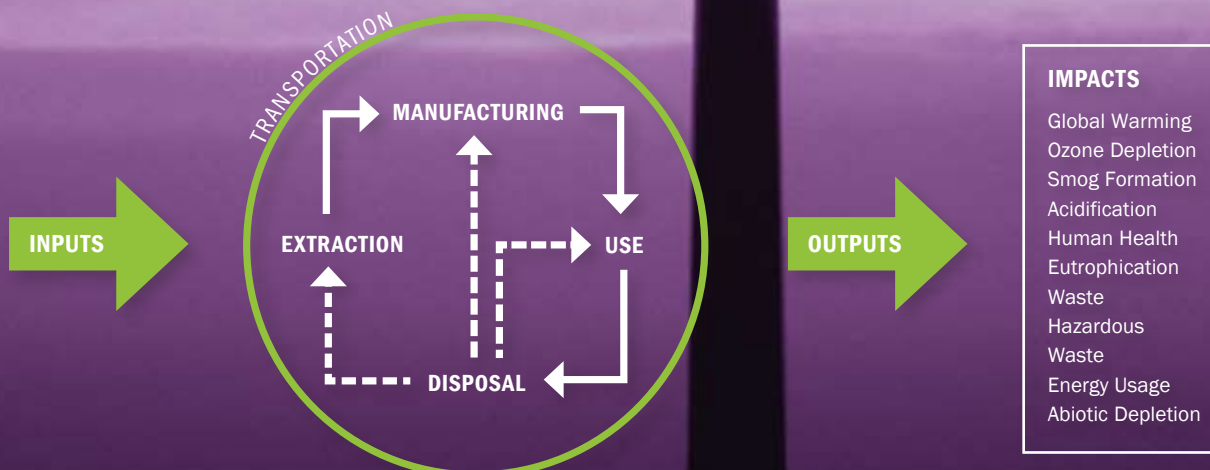
SEPARATE BY FOOTPRINT TYPE

- Air, soil or water—direct environmental impact
- Sewage, waste—taken care of for destruction
- Product—remains to take care of during decommission
- Recycle or reuse—taken care of during delivery process or result of decommission

ESTIMATE IMPACT

LIFECYCLE ASSESSMENT

With increasing demands on business to take responsibility along an entire supply chain, lifecycle assessment capabilities are essential. Being able to analyze the complete lifecycle of a product from supplier to usage and even to decommissioning—from cradle to grave—puts you in complete control of your eco-impact. It helps you more easily meet compliance requirements (e.g. ISO 14040) and can be used to produce more accurate product declarations and make production 'greener' at lower cost to the environment—and to you.



TURNING PAIN INTO PROFIT

IFS Eco-footprint Management helps you resolve one of the major sustainability issues—how to move beyond well-meaning intuitive actions (“This feels right”) to arrive at measurable environmental evaluation based on meaningful data. It enables you to calculate and analyze the environmental impact of your operations, control costs, and prepare for future eco-legislation because it is tightly integrated with your ERP solution, allowing you instantaneous access to all the data you require.

USER-DEFINABLE FOR GREATER AGILITY

One of the great advantages of IFS Eco-footprint Management is that it is user-definable. You can set it up to measure the variables that are the most

relevant to your industry, whether they are carbon dioxide, ammonia or lead, for example, or even variables that are not substances in the strict sense of the word, such as energy. So no matter what industry you are operating in, the component can be used to provide you with the data you require to measure the impact of your business on the environment.

How do you want to trace your eco-footprint? By end product? By work center? By transportation? Or would you prefer to know who or what the worst contributors are over a period or by volume? Most certainly, you will also want to keep an eye on trends for different variables as well. Perhaps make eco-estimates for future planning? Whatever way you need or want to measure how ‘green’ your

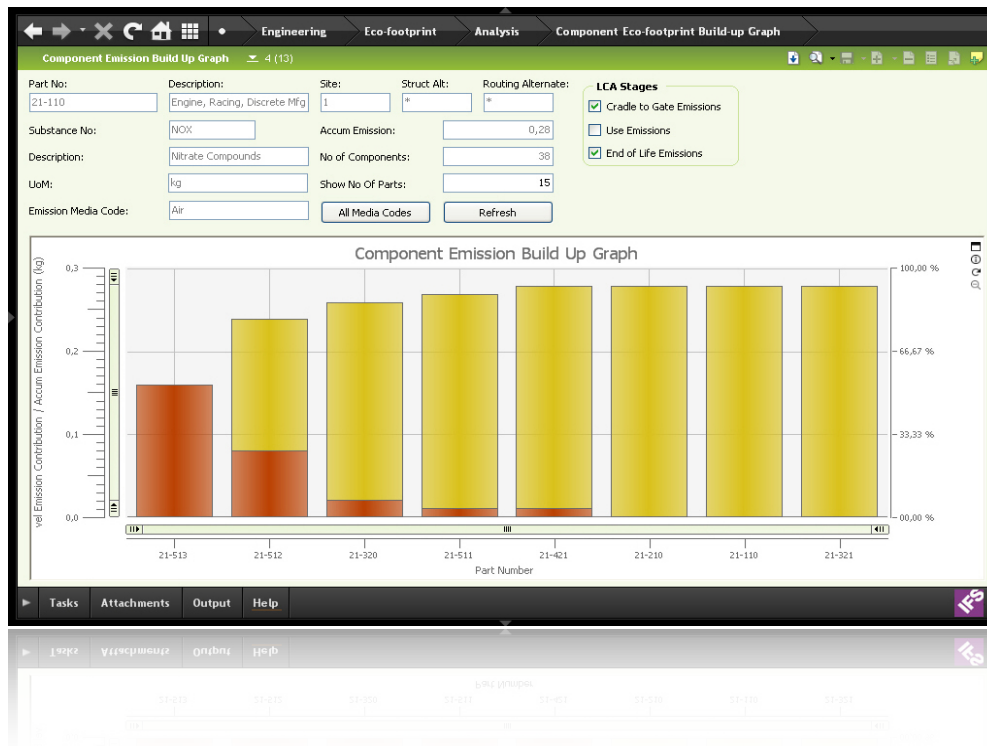
The screenshot displays the 'Environmental Footprint per Part - 21-110' window. The top section contains a form for part details, including Part No. (21-110), Description (Engine, Racing, Discrete Mfg), Struct. Alt., Rout. Alt., Effective Date (2009-12-04), Eff Serial No., Site, Planner, Part Type (Manufactured), UoM (PCS), Inventory Value (12 123,45), Product Code (210), Discrete Mfg Racing Engine, Calculation Date (2009-12-04 15:19:25), Currency Code (USD), Product Family (200 Engines), Std Lot Size (1), Func Unit Value (100), Functional UoM (kW), Multi-Site Planned Part, Lifetime (200000), and Lifetime UoM (h). Below the form is the 'Emission Build-up Tree View' table.

Substance No	Description	Emission Media	UoM	Level CTG Emission	Accum CTG Emission	Level Emission	Accum Emission	Level Emission	Accum Emission
1163-19-5	Decabromobip...	Product	kg	0	0,01				
4719-04-4	CSH2IN3O3	Air	kg	4,016	11,048				
50-00-0	Formaldehyde	Product	kg	0	0,22				
8009-03-8	Petrolatum	External...	kg	3,14	3,14				
8009-03-8	Petrolatum	Product	kg	0	0	0	0	0	0
BENZENE	Benzene	Water	kg	0,08	0,24	0	0	0	0
CADMILUM	Cadmium	Product	kg	0	0,003	0	0	0	0
CADMILUM	Cadmium	Recycling	kg	0	1	0	0	0	-1
CO2	Carbon Dioxide	Air	kg	1,54	25,8418	60000	60000	2	2,1
LEAD	Lead	Product	kg	0	0,198	0	0	0	0
LEAD	Lead	Recycling	kg	0	5	0	0	0	-4,75
NH3	Ammonia	Waste	kg	0	0	20	20	0	0
NOX	Nitrate Com...	Air	kg	0	0,28	0	0	0	0
PHENOL	Phenol	Air	kg	0,01	0,01	0	0	0	0
PHENOL	Phenol	Water	kg	0,008	0,024	0	0	0	0

A yellow callout box contains the text: "Figures for November 09. Much improved compared with Nov 08. Do we need to meet? Peter".

IFS ECO-FOOTPRINT MANAGEMENT—CONTROLLING COMPLEXITY

If your organization is capable of measuring and analyzing the effect of the products and services you generate, it is well on its way to becoming 'green' and reducing its environmental footprint. The result will be more sustainable production and distribution, and a healthier bottom line in all respects. Does all this sound very complex? It is, but with IFS Eco-footprint Management you get full control, and eco-management becomes an ordinary part of your normal business day.



operations are—or are becoming—IFS Eco-footprint Management is the ideal tool for broad overviews and detailed breakdowns by production hour or item. You can also conduct equivalent calculations to sum up the effect of different emissions. As different substances have different potential effects on the environment (e.g. human toxicity, global warming, ozone depletion), being able to compare them gives you a better view of your 'standard' eco-impact.

IT'S ALL IN YOUR BUSINESS APPLICATIONS

With IFS Eco-footprint Management, you simply use existing components within IFS Applications

that capture financial cost to provide environmental impact information. With seamless access to data already in your business applications, it requires no great effort to measure and document your eco-footprint. Accurate documentation means greater transparency, which makes your green branding efforts more credible to legislators and consumers, and enables you to identify waste and cut costs. From boardroom concerns to shop floor execution, IFS Eco-footprint Management, which was designed in collaboration with customers, covers the entire spectrum and helps you do good while your business does well.

ABOUT IFS AND IFS APPLICATIONS

IFS (OMX STO: IFS), the global enterprise applications company, provides ERP solutions which enable organizations to respond quickly to market changes. The solutions allow resources to be used in a more agile way to achieve better business performance and competitive advantage.

Founded in 1983, IFS has 2,600 employees worldwide. With IFS Applications™, now in its seventh generation, IFS has pioneered component-based ERP software. The component architecture provides solutions that are easier to implement, run and upgrade. IFS Applications is available in 54 countries in more than 20 languages.

IFS has over 600,000 users across seven key vertical sectors: aerospace & defense; automotive; manufacturing; process industries; construction, contracting & service management; retail & wholesale distribution, and utilities & telecom. IFS Applications provide extended ERP functionality, including CRM, SCM, PLM, CPM, enterprise asset management and MRO capabilities.

If you are interested in further information, e-mail to info@ifsworld.com or contact one of our regional offices or visit our web site:

www.IFSWORLD.com

AMERICAS	+1 888 437 4968
ARGENTINA, BRAZIL, CANADA, MEXICO, UNITED STATES	
ASIA PACIFIC	+61 2 8904 9222
AUSTRALIA, INDONESIA, JAPAN, MALAYSIA, NEW ZEALAND, PHILIPPINES, PR CHINA, SINGAPORE, THAILAND	
EUROPE EAST AND CENTRAL ASIA	+48 22 577 45 00
BALKANS, CZECH REPUBLIC, GEORGIA, GREECE, HUNGARY, KAZAKHSTAN, POLAND, RUSSIA, SLOVAKIA, TURKEY, UKRAINE	
EUROPE CENTRAL	+49 9131 77 340
AUSTRIA, BELGIUM, GERMANY, ITALY, NETHERLANDS, SWITZERLAND	
EUROPE WEST	+44 1494 428 900
FRANCE, PORTUGAL, SPAIN, UNITED KINGDOM	
MIDDLE EAST AND AFRICA	+9714 390 0888
INDIA, SOUTH AFRICA, SRI LANKA, UNITED ARAB EMIRATES	
NORDIC	+46 13 460 4000
DENMARK, NORWAY, SWEDEN	
FINLAND AND THE BALTIC AREA	+358 102 17 9300
ESTONIA, FINLAND, LATVIA, LITHUANIA	

www.IFSWORLD.com

THIS DOCUMENT MAY CONTAIN STATEMENTS OF POSSIBLE FUTURE FUNCTIONALITY FOR IFS' SOFTWARE PRODUCTS AND TECHNOLOGY. SUCH STATEMENTS OF FUTURE FUNCTIONALITY ARE FOR INFORMATION PURPOSES ONLY AND SHOULD NOT BE INTERPRETED AS ANY COMMITMENT OR REPRESENTATION. IFS AND ALL IFS PRODUCT NAMES ARE TRADEMARKS OF IFS. THE NAMES OF ACTUAL COMPANIES AND PRODUCTS MENTIONED HEREIN MAY BE THE TRADEMARKS OF THEIR RESPECTIVE OWNERS.

IFS AB © 2010