

## TRACK AND MEASURE YOUR COMPANY'S ENVIRONMENTAL FOOTPRINT

Consumers are becoming more aware of the environmental implications of their purchasing decisions. The businesses that serve them are responding, and are positioning themselves, and their products, as “greener” than their competitors. Industrial manufacturers and others in the business-to-business realm are also working to lay claim to the “green” label.

Meanwhile, environmental regulation worldwide is becoming more stringent. The EuP Directive, ELD, REACH, RoHS, WEEE, and new regulation pending from a new US presidential administration – including regulation proposed in the US Climate Action Partnership (USCAP) Blueprint for Legislative Action all present industries with new risks and challenges.

It is clear that today an industry needs to document its environmental initiatives to satisfy the market. It also needs to document its environmental initiatives to the satisfaction of government regulators.

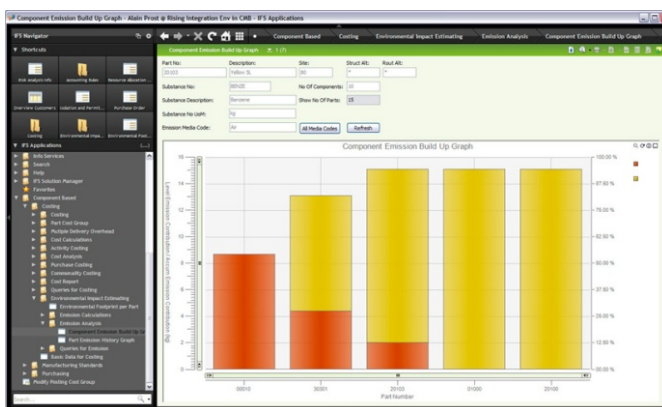
### A SOUND, INTEGRATED APPROACH

For years, there have been environmental compliance software products on the market, but these were completely separate from the enterprise software that a manufacturer might run across the enterprise. This meant either a costly and risky integration process to get the two software platforms to talk to each other or ongoing duplicate data entry, which increases cost and allows opportunity for error.

At IFS, we see IFS Applications™ as the business equivalent of the circulatory system in the body. The circulatory system delivers oxygen and blood to the organs of the body and carries away waste products. IFS Applications tracks and channels business value, revenue and cost throughout the enterprise. Rather than force IFS customers to implement a completely separate “circulatory system” to track environmental impacts like carbon footprint, waste streams and product lifecycle impacts, we created IFS Eco-footprint Management, which in essence adds fields to software components that already

track financial costs, tracking these environmental costs as well.

Now, with IFS Eco-footprint Management, IFS customers can enjoy powerful environmental footprint management functionality using an approach that is similar to standard costing. As products are designed and manufactured, environmental impacts are assigned to each unit, and rolled up into reporting reports that detail the impacts of product lines, business units or the entire enterprise.



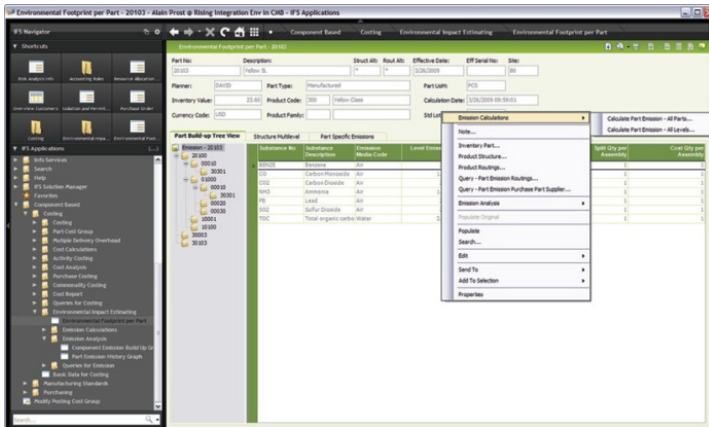
### WHAT DOES THIS MEAN TO YOU?

- Unprecedented insight into which parts and processes of the business impact on the environment.
- A clear methodology framework for measuring ecological impact.
- A head start with compliance with advancing environmental regulation.



**USER DEFINABLE**

Getting started with IFS Eco-footprint Management is as simple as deciding what environmental impacts you would like to track. This decision might be driven by regulation, by the value system of corporate management or by customer demand for environmental accountability. A subsequent step will be to identify processes that drive these impacts, including supply chain management and various elements within manufacturing. The level of detail and the number of different impacts tracked are completely user-



definable. A manufacturer might start with a set of default values, can expand on those defaults or start from scratch. To begin with, IFS customers may want to start with a limited number of environmental impacts and increase the sophistication of their program over time – tracking initially what is absolutely necessary.

Environmental impacts could then be tracked directly by product or indirectly by manufacturing process.

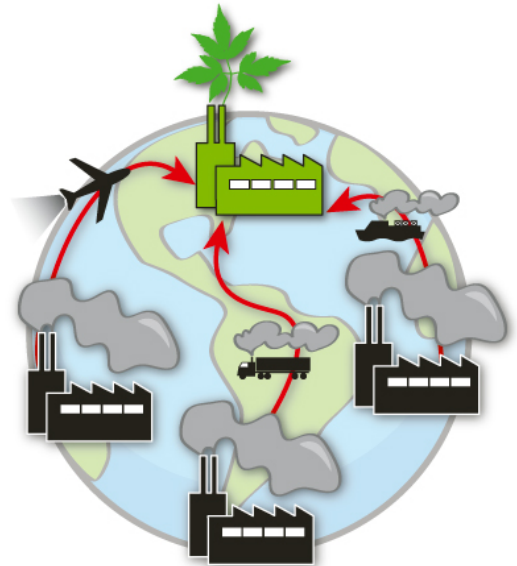
**WHO SHOULD USE THIS?**

IFS Eco-footprint Management is based on the notion of parts, and can therefore be used by any company involved in discrete manufacturing, batch process manufacturing, engineer-to-order, make to order, engineer procure construct, and most other business models apart from continuous process.

It is available as a functional module for IFS Applications 7.5, and requires only IFS Distribution™ and in some cases IFS Manufacturing™ to operate.

**WHAT ABOUT MEASURING PRODUCT LIFECYCLE IMPACT?**

IFS Eco-footprint Management was originally envisioned as a tool for measuring the impacts of the manufacturing process but can also be configured to measure the environmental impacts of finished products over their lifecycles. IFS is working to develop standard forms that allow customers to enter impact by hour of operation or by other effective unit, with these units being rolled up into a total impact during the product’s lifetime expectancy. This lifecycle impact could also account for the impact of parts that would need to be replaced and for other consumables, as well as the impact of a decommissioning phase including recycling and re-use.



**FURTHER INFORMATION**

If you are interested in finding out more about IFS Applications and IFS Eco-footprint Management, visit [www.IFSWORLD.com/green](http://www.IFSWORLD.com/green) or get in touch with your local IFS contact.